



October 1996

EMBARGOED UNTIL 11.00 AM THURSDAY 3 OCTOBER 1996

# South Australian Economic Indicators

Statistics ■



# **SOUTH AUSTRALIAN ECONOMIC INDICATORS**

**October 1996**

**P.M. GARDNER**  
Regional Director

**AUSTRALIAN BUREAU OF STATISTICS**

**CATALOGUE NO. 1307.4**

© Commonwealth of Australia 1996

Produced by the Australian Government Publishing Service

## PREFACE

*South Australian Economic Indicators* is a monthly publication which contains the latest available data at the time of preparation for a range of statistical series that have been identified as indicators of economic activity in this State. In a number of cases the figures presented are preliminary and subject to revision in subsequent issues.

Written and graphic commentary have been included for many of the selected series and analysis has been augmented with the calculation of the percentage change from the previous reference period together with the presentation of comparative Australian data.

Time series information has been included to provide a historical perspective on many of the selected indicators. Future issues may be expanded to include further historical data in response to expressed user needs. This product is under continuous review and any suggestions for enhancement will be welcomed.

More detailed information on each series, including explanatory and technical notes, can be obtained from other Australian Bureau of Statistics publications or alternative data sources. To assist those seeking further information a source publication for each of the series has been documented in the statistical summary.

If you have any inquiries concerning this publication please contact the editor, John Callinan, telephone (08) 8237 7307. All requests for statistical information should be directed to the ABS Information Service, GPO Box 2272, Adelaide SA 5001, telephone (08) 8237 7100.

P.M. GARDNER  
Regional Director

Australian Bureau of Statistics  
Adelaide  
September 1996



## CONTENTS

	Page
	iii
<b>REVIEW</b>	2
Overview	
State accounts	
International accounts	
Consumption and investment	
Production	
Prices	
Labour force and demography	
Incomes	
Financial markets	
Forward outlook	
<b>STATISTICAL SUMMARY</b>	18
State accounts	
International accounts	
Consumption and investment	
Production	
Prices	
Labour force and demography	
Incomes	
Financial markets	
<b>TIME SERIES</b>	
State accounts - current prices	20
State accounts - average 1989-90 prices	21
Merchandise exports by commodity group	22
Merchandise exports by country	22
Merchandise exports by industry of origin	23
Merchandise imports by commodity group	23
Turnover of retail establishments by industry	24
New motor vehicle registrations by type of vehicle	25
Actual private new capital expenditure by selected industry and type of asset	26
Tourist accommodation	27
Building approvals	28
Building commencements	29
Value of building work done during period	29
Production, livestock and selected commodities	30
Consumer price index, by group	32
Average retail prices of selected consumer items	33
Estimated resident population and components of population change	33
Labour force - numbers	34
Labour force - rates	35
Labour force - regions	36
Average weekly earnings of employees	38
Finance commitments	39
For more information	40

# REVIEW

---

## Overview

---

- Gross state product (GSP) grew 0.8% in the June quarter compared with the national average of 1.4%. Wages, salaries and supplements grew 0.8%, slightly lower than in recent quarters, while gross operating surplus grew by 1.0% in the June quarter.
- In July 1996 the value of merchandise exports were \$349.7 million a 0.5% increase on June. The value of exports exceeded merchandise imports by \$84.3 million.
- The trend estimate of retail turnover in South Australia increased by 0.9% in July 1996, compared with 0.4% for Australia.
- The trend estimate for new motor vehicle registrations in July 1996 decreased 1.8%.
- When the June quarter 1996 is compared with the June quarter 1995 room nights occupied in hotels, motels and guest houses rose by 5.3%, exceeding a 2.5% increase in room supply and resulting in an occupancy rate of 51.4%.
- The trend estimate for private new capital expenditure increased 4.6%, to \$476 million, for the June quarter 1996. The Australian figure rose by 6.6%.
- The trend estimate for the total number of dwelling units approved remained steady for July 1996 but represented a 19.5% fall from the July 1995 estimate.
- A total of 1,308 dwelling units were commenced during the June quarter 1996. This is up 1.0% on the previous quarter and compares with an 8.8% rise for Australia.
- The Price Index for Materials used in House Building rose by 0.8% in July while the index for Non-House Building, showed no movement.
- The trend unemployment rate has decreased from 9.7% in August 1995 to 9.3% in August 1996.
- There was a drop of 17.7% in the number of short term overseas visitors to South Australia in June 1996.
- The trend estimate for the value of owner-occupied housing commitments continued the decline evident since January, falling 3.2% to \$224.0 million in July (8.3% below July 1995).



## State Accounts

**NOTE:** Deficiencies in the data sources used to estimate gross operating surplus for recent quarters may at times lead to the current price estimates of gross state product GSP(I) being under or over stated for particular States. Consequently, the measured growth rate for constant price GSP(I) for those States will also be affected.

The constant price series for gross state product (GSP) have been labelled as 'experimental'. Users are cautioned that these estimates are derived indirectly by calculating a deflator from the expenditure components. It is emphasised that, at times, movements that can not be fully explained may be introduced into the constant price GSP(I) series through the use of this proxy deflator.

### Trend Estimates (Current Prices)

Gross state product (GSP) grew 0.8% in the June quarter compared with the national average of 1.4%. This is the third consecutive quarter in which the rate of increase in GSP has slowed and is considerably below the strong growth of 2.3% recorded in the September quarter 1995.

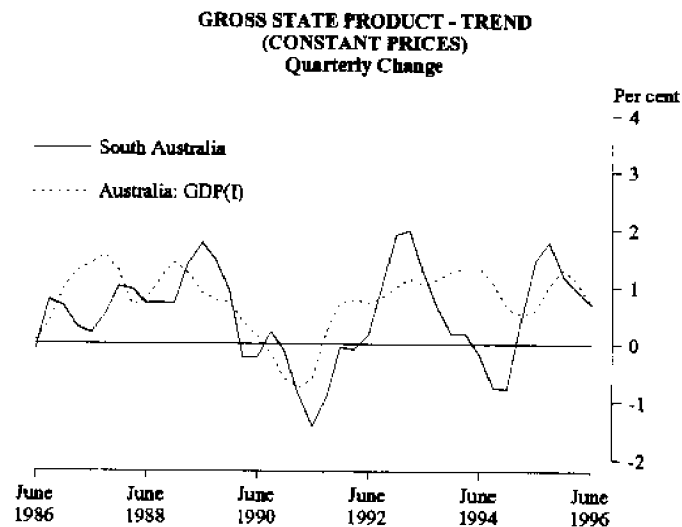
Wages, salaries and supplements grew 0.8%, slightly lower than in recent quarters. Growth continues to be below the national rate, a trend evident since the December quarter 1993. Growth through the year to June quarter 1996 was 4.8% compared with the national average of 6.2%.

Gross operating surplus grew by 1.0% in the June quarter, continuing a pattern of falling growth rates evident from December quarter 1995. By contrast the national average has remained fairly constant at about 1.8% for the past 3 quarters.

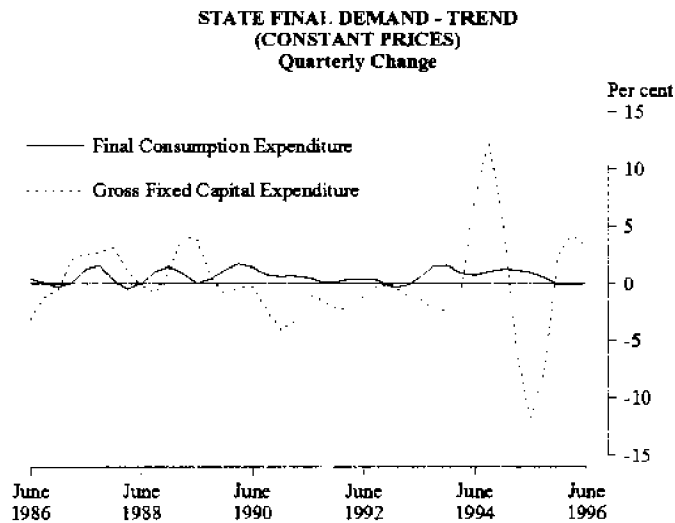
Indirect taxes less subsidies grew by 0.4% in the June quarter, continuing a pattern of falling growth rates evident from the September quarter 1995.

### Trend Estimates (Constant Prices)

The experimental GSP at constant prices grew 0.7% in the June quarter and was 4.7% above June quarter 1995. The increase in GSP outstripped that of state final demand for the sixth consecutive quarter although the gap has narrowed significantly over the past 2 quarters.



Growth in state final demand of 0.6% in the June quarter is below the national growth of 0.9% in domestic final demand. Growth in state final demand has been below the national average for 6 consecutive quarters although the gap has narrowed over the past 2 quarters.



Private final consumption expenditure grew 0.4% in the June quarter compared with the national average of 0.8%. Growth in private final consumption expenditure has been fairly constant over the past 3 quarters. Growth through the year to the June quarter 1996 was 2.1%, approximately half the national rate of 4.1%.

Private gross fixed capital expenditure grew 2.8% in the June quarter compared with the national average of 1.8%. Increases in expenditure on equipment and non-dwelling construction more than offset the decline in expenditure on dwellings, which fell for the seventh consecutive quarter.

The decline of 0.1% in public final demand reflects a fall in government final consumption expenditure (which fell for the sixth consecutive quarter) and quite strong growth in public gross fixed capital expenditure.

## International Accounts

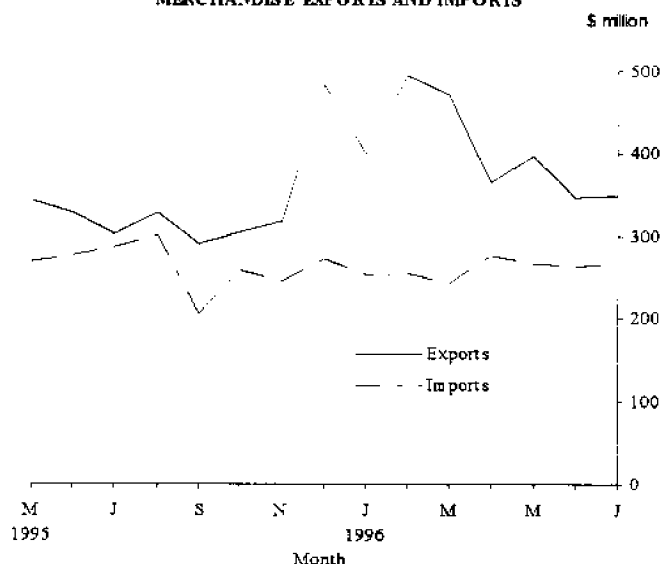
### Exports

In July 1996 the total value of merchandise exports was \$349.7 million, a 0.5% increase on June and 15.7% on July 1995.

The commodity groups showing the largest increases when compared with the previous month were cereal and cereal preparations up \$25.8 million, road vehicles, parts and accessories up \$24.0 million and petroleum and petroleum products, up \$11.1million. These commodities accounted for an increase of \$60.9 million which was partly off set by decreases in metals and metal manufactures, down \$20.7 million.

New Zealand recorded a large increase in the importation of Australian merchandise with \$57.6 million worth of goods exported to that country in July an increase of \$31.9 million on June and the largest figure recorded in past 15 months.

## MERCHANDISE EXPORTS AND IMPORTS

*Imports*

The value of merchandise imports for July 1996 was \$265.4 million, an increase of 1.5% on the previous month but a decrease of 7.4% on July 1995. The commodities which accounted for the largest proportion of imported merchandise were machinery and other manufactured goods which represented 49% of all goods imported in July 1996.

## Consumption and Investment

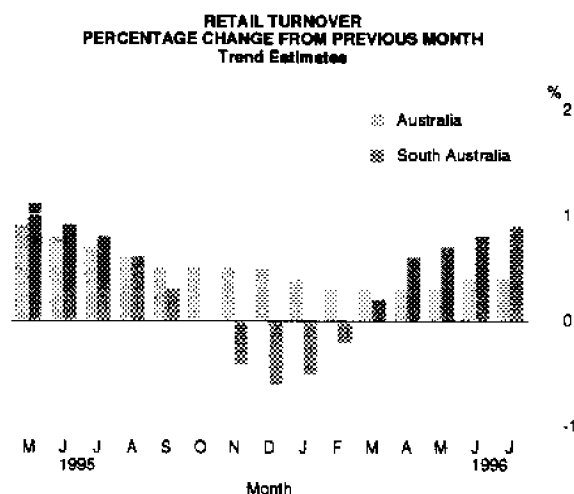
---

*Retail Turnover*

The trend estimate of retail turnover in South Australia increased by 0.9% in July 1996, continuing the growth since March. The trend estimate for Australia increased by 0.4%.

In the three months to July 1996 the trend estimate for South Australia grew by \$18.7 million caused by increases of \$14.9 million in the food retailing, \$6.5 million in hospitality and services, \$1.9 million in department stores, and \$1.5 million in recreational good retailing. This was partly offset by decreases of \$3.1 million in other retailing group, \$1.7 million in household good retailing, and \$1.4 million in clothing and soft good retailing.

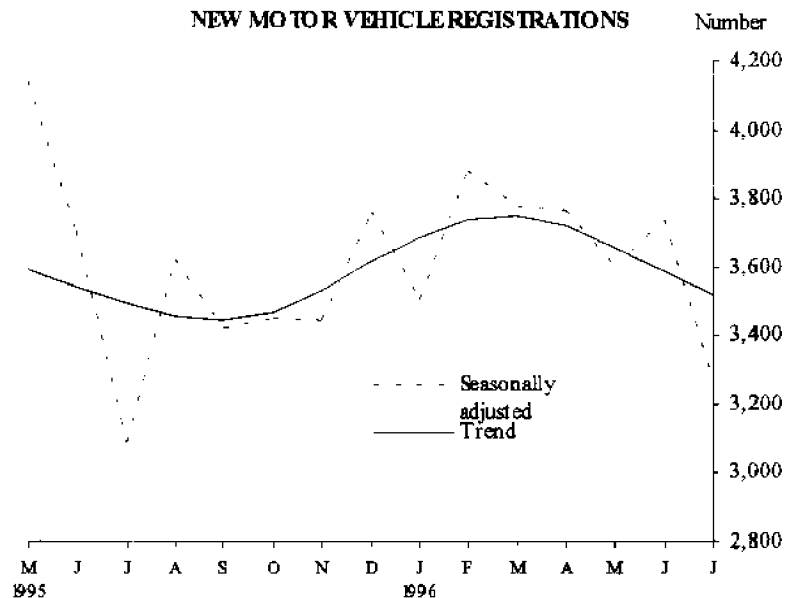
The seasonally adjusted estimate of retail turnover in July 1996 increased 1.0%. In original terms, retail turnover was \$758.7 million, an increase of 4.0% on July 1995.



### New Motor Vehicle Registrations

The South Australian trend estimate for new motor vehicle registrations in July 1996 decreased 1.8%. The seasonally adjusted estimate for July 1996 decreased by 12.7% from June 1996 and increased by 5.6% from July 1995.

In original terms there were 3,456 new motor vehicles registered in July 1996, a decrease of 12.1% from June 1996 and an increase of 15.5% on July 1995. For new passenger vehicles, the leading makes registered in July 1996 were Holden (701 vehicles), Ford (560), Mitsubishi (490), Toyota (347) and Hyundai (201).



### Tourist Accommodation

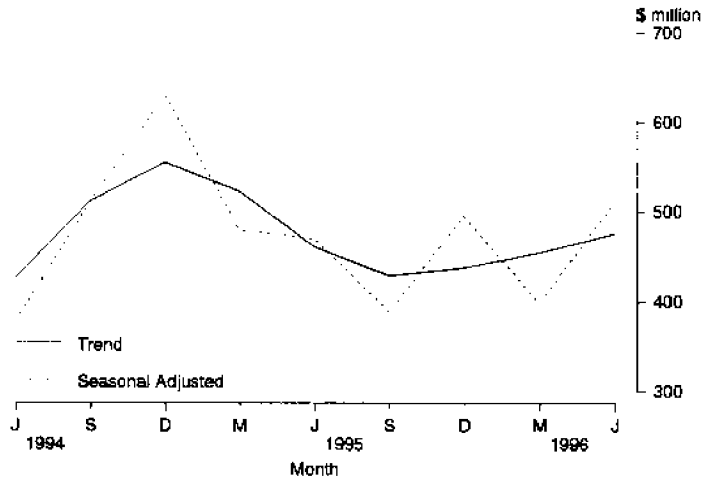
When the June quarter 1996 is compared with the June quarter 1995, the number of rooms available in hotels, motels and guesthouses in South Australia increased from 10,605 to 10,865 while bed spaces increased from 30,013 to 30,800. Room nights occupied rose by 5.3%, exceeding a 2.5% increase in room supply and resulting in an occupancy rate of 51.4%. Regional room occupancy rates ranged from 58.7% in the Adelaide Statistical Division to 38.6% in the Eyre Statistical Division. Takings from accommodation increased by 9.3% from \$35.8 million to \$39.1 million with average takings per room night occupied rising from \$74 to \$77.

### Private New Capital Expenditure

The trend estimate (in current prices) for private new capital expenditure in South Australia for the June quarter 1996 was \$476 million. The increase of 4.6% from the previous quarter is a continuation of trend growth which commenced in December quarter 1995. The Australian figure rose by 6.6%. The South Australian total for the quarter now represents 4.7% of the Australian figure.

Private new capital expenditure in original terms for the June quarter 1996 was \$513 million, an increase of 36.8% from the March quarter 1996. Buildings and structures accounted for \$108 million, and equipment, plant and machinery \$405 million. Expenditure for the 12 months to June 1996 fell by 15.3% from 12 months to June 1995 with the Australian figure rising by 10.2%.

PRIVATE NEW CAPITAL EXPENDITURE



**Production**

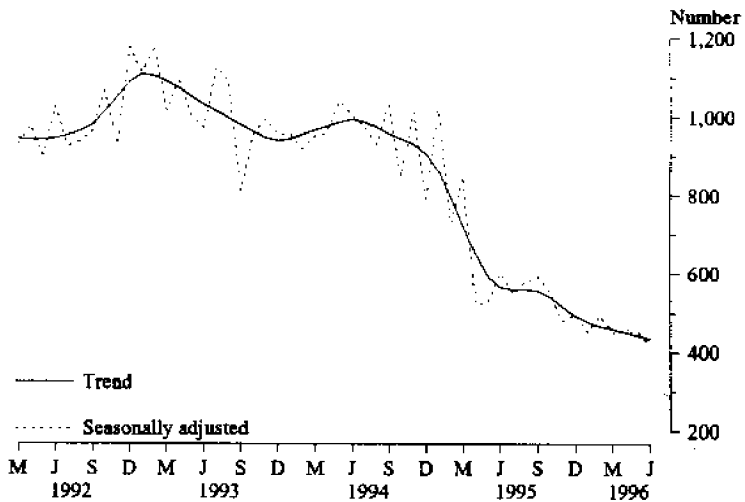
*Dwelling Approvals*

The trend estimate for the total number of dwelling units approved in South Australia remained steady for July 1996 at 449 but represented a 19.5% fall from the July 1995 estimate. The original number of dwelling units approved in July 1996 was 528, an increase of 21.1% from the previous month.

Nationally the trend for the total number of dwelling units approved continued its upward movement to 10,375. This however, was still 7.0% lower than the estimate for July 1995.

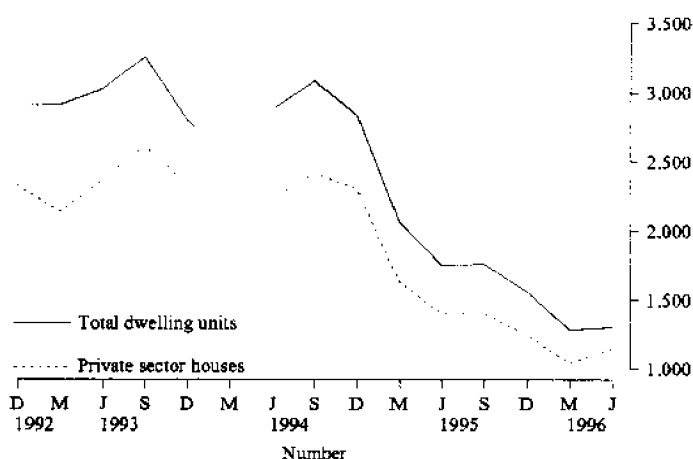
In original terms, South Australia accounted for 4.5% of the total dwellings approved in Australia during July 1996.

DWELLING UNITS APPROVED



**Dwelling Commencements**

From the Building Activity Survey, it was estimated that 1,308 dwelling units were commenced in South Australia during the June quarter 1996. The latest figure represented a rise of 13 dwelling units (1.0%) from the previous quarter compared with a 8.8% rise nationally. The latest figure for South Australia was 25.8% below the total for the June quarter 1995 while the national decrease over the twelve month period was 16.4%.

**NEW DWELLING UNITS COMMENCED****Value of Non-residential Building Approvals**

Non-residential building approvals for South Australia for July 1996 were valued at \$41.9 million. Private sector work accounted for 64.0% of this total. In July 1996 South Australia contributed 4.8% to the total value of Australian non-residential building approvals of \$873.6 million.

Expressed in average 1989-90 prices the value of non-residential projects approved in South Australia for the June quarter 1996 was \$178.2 million, a 50.8% increase from the March quarter.

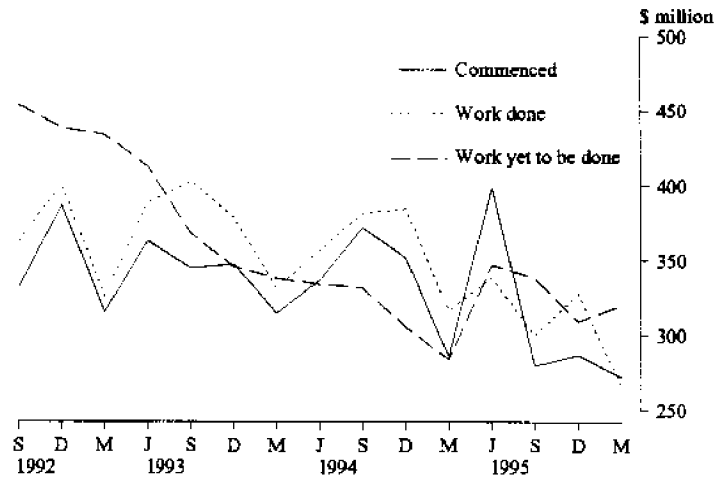
**Value of Total Building Activity**

The total value of building work commenced in South Australia during the March quarter 1996 fell 5.4% from the previous quarter to \$271.9 million. Compared with the March quarter 1995, South Australia had a 5.1% decrease in building commencements while the corresponding national movement was a 11.3% decrease. The South Australian share of the national total of building commencements was 4.5% for the March quarter.

The total value of building work done during the March quarter 1996 fell by 18.8% to \$266.1 million with a similar decrease (18.3%) nationally. Compared with the March quarter 1995, South Australia had a 16.2% decrease in the value of total building work done while the corresponding national movement was a 8.8% decrease.

The total value of building work yet to be done in South Australia rose by 3.8% for the March quarter 1996. The corresponding national figure rose by 5.7% to \$8,793.4 million. Expressed as a proportion of the national total, the total value of building work yet to be done in South Australia was 3.6% for the March quarter.

VALUE OF BUILDING ACTIVITY



Value of Engineering Construction

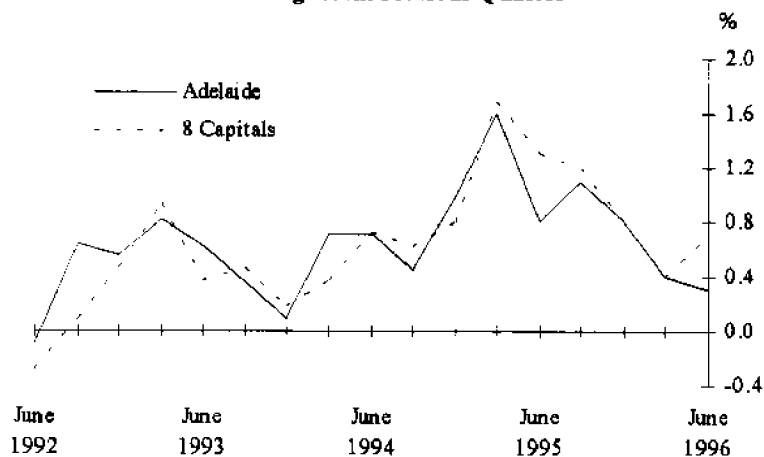
In the March quarter 1996 the value of engineering construction work done in South Australia increased by 17.9% to \$198.8 million compared with a decrease of 8.6% nationally. South Australia had a 5.8% share of the national total of \$3,446.2 million. The value of work commenced during the quarter more than doubled to \$307.8 million for South Australia with the national figure increasing by 50.1%. The State's proportion of national commencements was 6.8%.

Prices

Consumer Price Index

For the June quarter 1996 the Consumer Price Index (all groups) increased 0.3% for Adelaide compared with an increase of 0.7% for the 8 capital cities. The annual increase was 2.7% for Adelaide and 3.1% for the 8 capital cities.

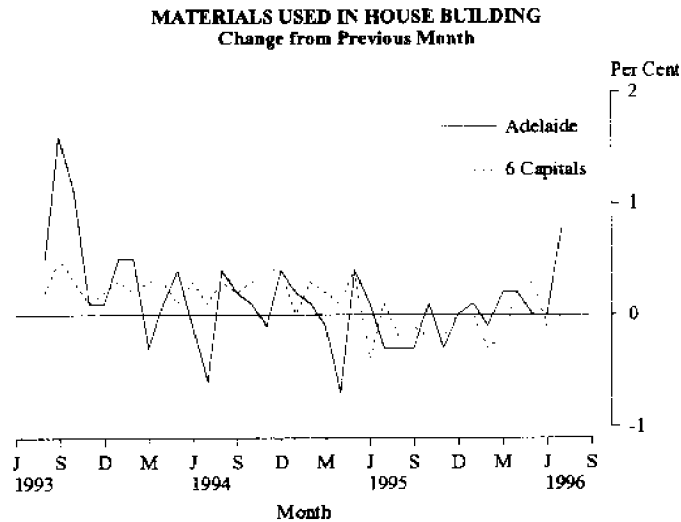
CONSUMER PRICE INDEX  
Change from Previous Quarter



House Building Materials

Cupboards, ready mixed concrete and aluminium window prices increased in Adelaide for July which caused the Price Index for Materials used in House Building to rise by 0.8%. The weighted average for the 6 State Capital cities remained unchanged.

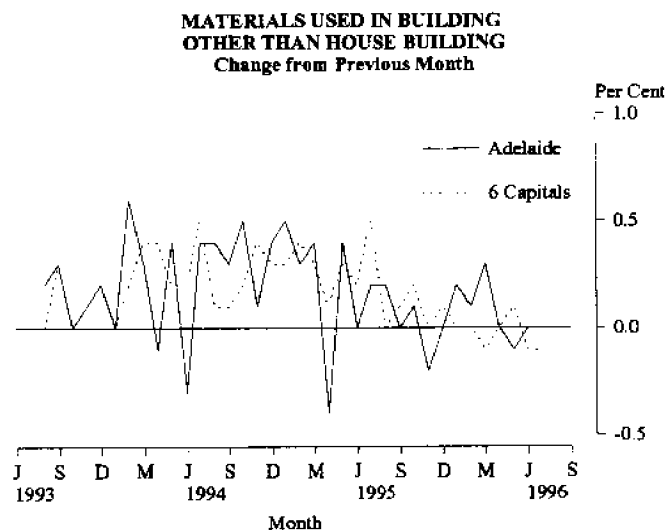
For the 12 months to July 96, the index has risen 0.5% for Adelaide, compared with the weighted average of the 6 State capital cities decrease of 0.8%.



#### Non-house Building Materials

The Price Index of Materials used in Building other than House Building, showed no movement in July. The index has fallen by 0.1% from June for the weighted average of the 6 State capitals.

The index has risen by 0.5% over the 12 months to July for Adelaide, compared with a rise of 0.2% for the same period for the weighted average of the 6 State capitals.



#### House Prices

The Price Index of Established Houses in Adelaide increased 0.2% whilst the Project Home Index decreased by 0.9% during the June quarter 1996. The weighted average of the eight capital cities index, over the same period showed a 1.2% and 0.1% increase respectively.

Between June quarter of 1995 and 1996 the Price Index for Established Houses in Adelaide decreased by 3.0% and project homes by 2.2%. Nationally, for the 12 month period, established house prices recorded a 1.1% increase and project homes rose by 0.8%.



## Labour Force and Demography

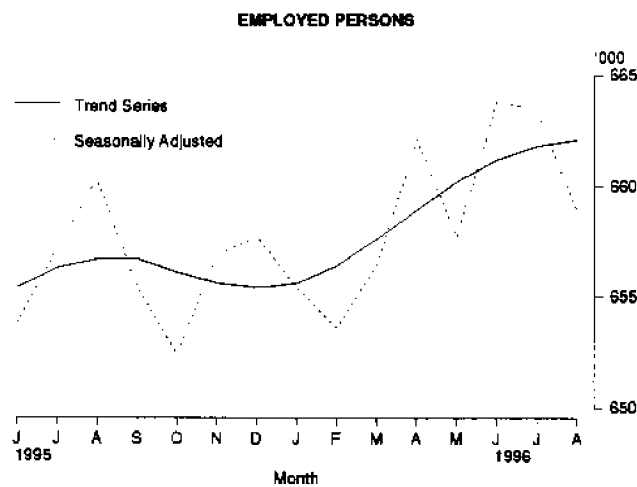
### Population

At 31 March 1996 the estimated resident population of South Australia was 1,477,700. This was an increase of 0.12% (2,210) persons from the December quarter. The continuing low growth rate for South Australia is attributable to a net outflow in interstate migration of 1,476 persons which was partly offset by a net inflow of overseas migration of 1,370 persons. In the March quarter there was a natural increase of 2,316 persons.

### Employment

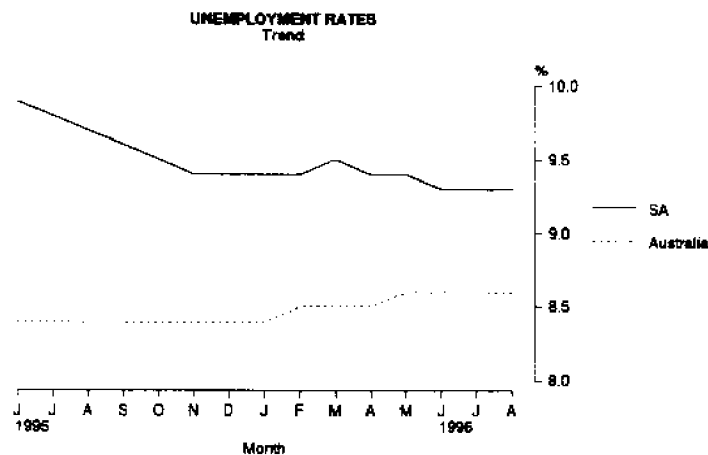
The trend estimate of employed persons in South Australia has been increasing since January 1996. The August 1996 estimate (662,100) is 0.8% higher than the level of 12 months ago.

The trend estimate of employed persons in Australia is 8,358,200. This is 1.1% higher than the level for August 1995. Over the past year, full-time and part-time employment have increased by 0.7% and 2.3% respectively.



### Unemployment

The trend unemployment rate for South Australia has decreased from 9.7% in August 1995 to 9.3% in August 1996. Over the same period the trend unemployment rate for males has decreased from 10.7% to 9.8%, while the rate for females has increased from 8.3% to 8.7%.



In each of the 4 months to August 1996, the trend estimate of the unemployment rate in Australia has remained at 8.6%.

#### Overtime

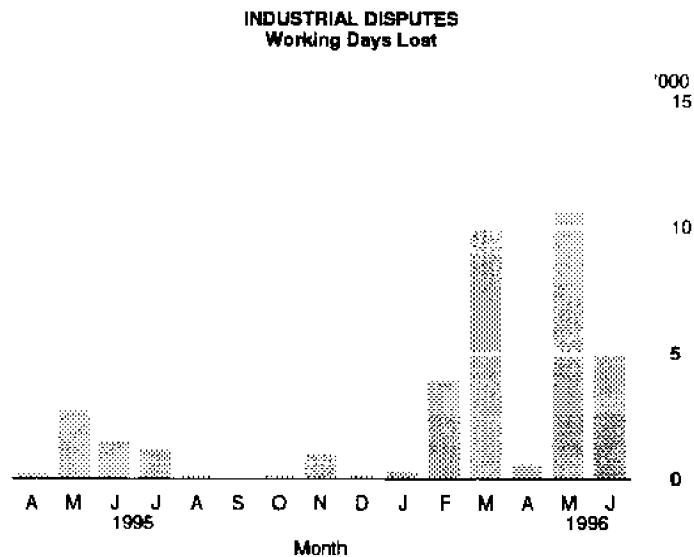
The proportion of employees who worked overtime in South Australia in May 1996 was 16.1%. This was slightly lower than the May 1995 figure of 16.7%.

An average of 6.6 overtime hours per week were worked by employees receiving overtime in South Australia in May 1996. This was lower than the corresponding national level of 7.3 hours.

#### Industrial Disputes

There were 5,000 working days lost through industrial disputes in South Australia during June 1996. This comprised 3.7% of the national total (133,400 working days lost).

In the twelve months to June 1996, 33,000 working days had been lost due to industrial disputes in South Australia.

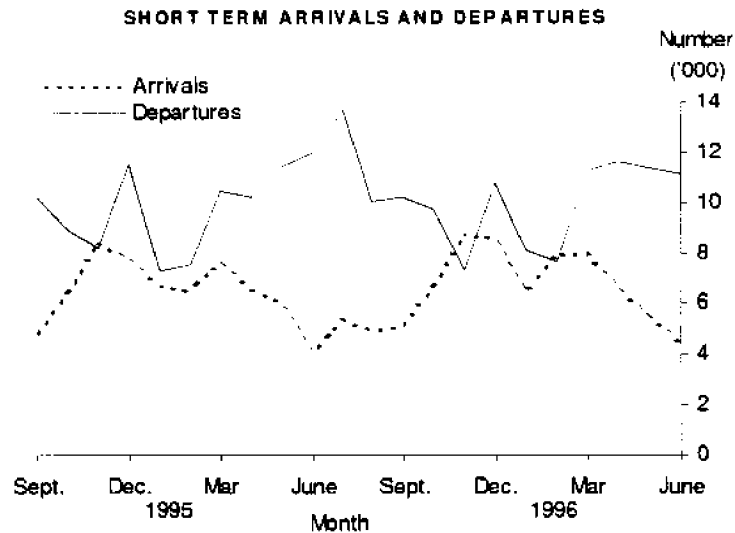


#### Short term Overseas Visitor Arrivals

There was a drop of 17.7% in the number of short term overseas visitors to South Australia in June 1996. However, the total of 4,525 visitors was 12.9% higher than in June 1995. The percentage of visitors to Australia choosing South Australia as their main State of intended stay was 1.5% of the Australian total.

#### Short term Resident Departures

In June 1996, 11,101 residents of South Australia made overseas trips, a decrease of 7.7% from June 1995. Over the same period, the number of Australian resident making overseas trips increased by 14.1%.



## Incomes

### Average Weekly Earnings

The trend estimate of average weekly ordinary time earnings of full-time adult employees in South Australia increased from \$625.40 in February 1996 to \$634.00 in May 1996. Male full-time ordinary time earnings rose from \$658.90 in February 1996 to \$671.70 in May 1996. Over the same period, the increase for females was less pronounced, from \$554.90 to \$555.20.

Between February 1996 and May 1996, the trend estimate of average weekly total earnings of all employees in South Australia increased from \$522.40 to \$531.50.

Since it is an average of earnings across all employees, changes in average weekly earnings may occur through changes in employment as well as changes in pay levels.

### Award Rates of Pay

Over the 12 months to July 1996, the weekly award rates of pay index for full-time employees in South Australia increased by 1.4%. This compares with an increase in the index of 1.0% for Australia.

For full-time adult male employees, the largest annual movement of the index occurred in the electricity, gas and water supply industry division, with an increase of 3.6%.

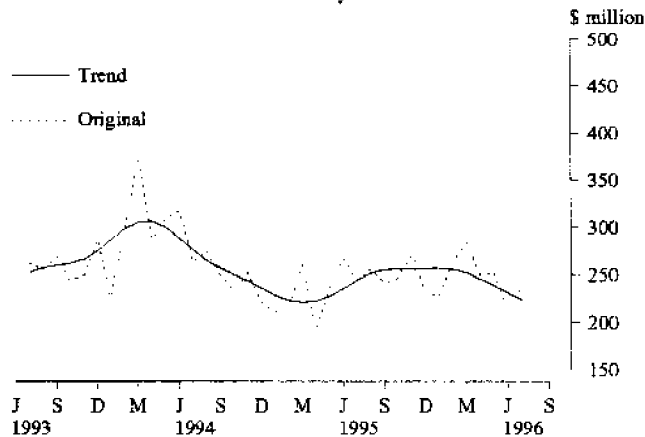
For full-time adult female employees, the largest annual movement of the index occurred in the public administration and defence industry division, with an increase of 2.1%.

## Financial Markets

### Housing Finance

The trend estimate for the value of owner-occupied housing commitments continued the decline evident since January, falling 3.2% to \$224.0 million in July (8.3% below July 1995). Nationally the decrease was 0.1% for the month, but 5.2% above the previous July.

**SECURED HOUSING FINANCE COMMITMENTS  
TO INDIVIDUALS (ALL LENDERS)  
(Excluding Alterations and Additions)  
Monthly Total**



Total housing finance commitments (original figures including alterations and additions) increased by \$20 million (8.3%) in July to \$259.7 million, 1.2% below the previous July. The most significant contributors to this increase were commitments for the purchase of established dwellings (the largest category) up \$13.7 million (9.9%) and refinancing up \$13.5 million (30.7%). Refinancing has now reached 22.1% of total new lending commitments.

Commitments for construction of dwellings declined 14.7% to \$23.0 million, the lowest month since January and 23.7% below the previous July. This was in contrast to the national increase of 14.8% for the month. Alterations and additions decreased by 16.8% to \$21.7 million from the high June figure.

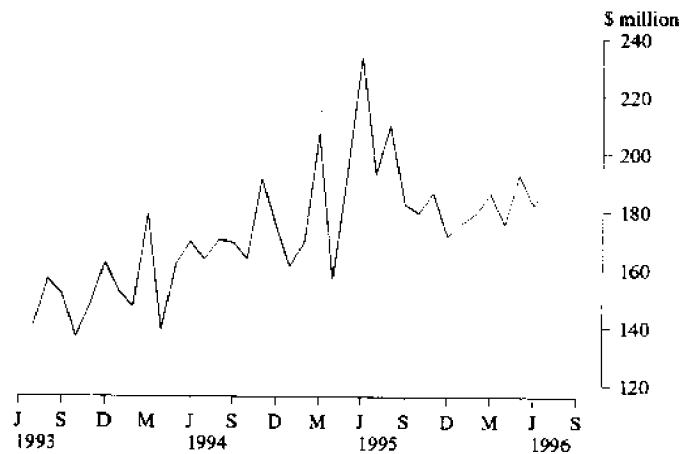
### Personal Finance

Total commitments for July increased 4.8% to \$190.8 million, marginally lower than July 1995. The national increases were 13.4% and 14.8% respectively. South Australian commitments dropped to 5.9% of the national total.

Fixed loan commitments increased 3.1% to \$120.9 million, 1.7% above July 1995. The largest category, used motor cars and station wagons increased 2.8% to \$36.6 million during the month (5.1% below July 1995), while commitments for new motor cars and station wagons decreased only marginally compared with June, but were still 4.2% above the previous July. Refinancing, the second biggest category, increased 8.7% to \$24.6 million. Debt consolidation was the other major category to increase, up 10.4% compared with the previous month, and 32.9% higher than July 1995.

Revolving credit facilities increased 7.9% to \$69.9 million during the month, 5.4% below July 1995. Secured commitments increased 60.7% to \$32.9 million, 18.5% above the previous July. Unsecured decreased 16.5% to \$36.9 million, 19.8% below the previous July.

**PERSONAL FINANCE COMMITMENTS  
(ALL LENDERS)  
Monthly Total**



*Lease Finance*

The value of goods under new finance lease commitments in July decreased by 27.1% to \$22.8 million following the June peak. South Australia's proportion of the national total fell to 3.1%.

Motor cars and station wagons not subject to depreciation, the largest category, decreased by 7.8% to \$5.9 million for new vehicles and by 28.1% to \$2.8 million for used. However, both these categories were up on July 1995, 4.3% and 5.7% respectively. Commitments for those subject to depreciation decreased 7.4% for new vehicles, but were up 8.8% for used, both well down on the previous year.

Commitments for new and used light trucks, new heavy trucks and other transport equipment, all decreased after the high figures recorded in June. Electronic data processing equipment increased 85.9% to \$2.3 million.

## Forward Outlook

### Composite Leading Indicator

The Composite Leading Indicator (CLI) is a single time series produced by aggregating eight individual economic indicators, and has been developed by the ABS as an experimental series to supplement existing forms of economic analysis and modelling.

The CLI summarises the early signals contained in a selection of economic indicators and is designed to assist the detection of turning points between successive expansions and slow downs of economic activity as measured by constant price GDP(A). It does not attempt to forecast the level of economic activity.

In the June quarter 1996 :

- the experimental CLI rose 0.27%, following a 0.26% rise in the March quarter 1996.
- The CLI is now showing a trough at the September quarter 1995 followed by strong growth..

The quarterly data are released in more detail in the *Australian Economic Indicators* (1350.0). The CLI was the topic of the Focus article in the September 1993 edition of *South Australian Economic Indicators* (1307.4).

### Australian Business Expectations

Surveys of business expectations have been available to decision makers for a number of years from several sources. These surveys provided *qualitative* indicators in the form of the net proportion of businesses expecting a rise or fall in future business conditions. Since the December quarter 1993, the ABS has been compiling a *quantitative* indicator of business expectations in the form of an expected weighted aggregate change in a range of economic variables. These data are available on a quarterly basis in *Australian Business Expectations* ( 5250.0).

#### AUSTRALIAN BUSINESS EXPECTATIONS SOUTH AUSTRALIA AND AUSTRALIA SALES OF GOODS AND SERVICES EXPECTED PERCENTAGE AGGREGATE CHANGE

Reference Period	Short term		Medium term	
	Expected aggregate change between		Expected aggregate change between	
	June 1996 and Sep. 1996	Sep. 1996 and Dec. 1996	June 1996 and June 1997	Sep. 1996 and Sep. 1997
	%	%	%	%
South Australia	0.3	2.1	2.3	3.3
Australia	1.6	1.6	3.6	3.1

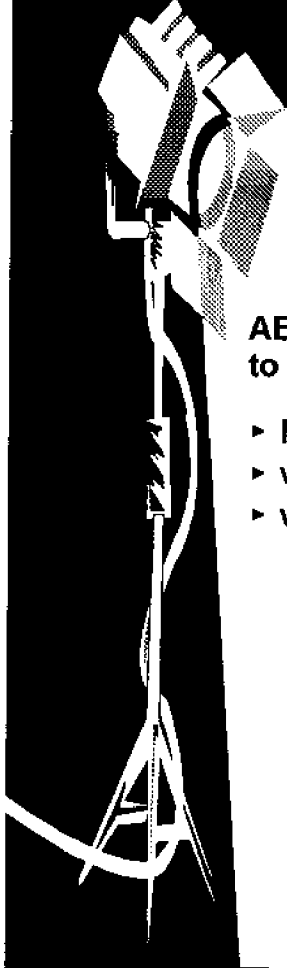
#### Short term

Businesses in South Australia expect a rise of 2.1% in sales of goods and services in the December quarter 1996 compared with the September quarter while the national expectation was a 1.6% increase.

#### Medium term

Businesses in South Australia expect sales of goods and services in the September quarter 1997 to be 3.3% above September quarter 1996. Australia wide the expectation was for 3.1% growth.

*Don't make your important  
business decisions in the dark*



**Information is the key  
to modern business  
success**

**ABS consultants can help you  
to find the information you need**

- ▶ how to find your best location
- ▶ who are your customers
- ▶ where are your customers

**Turn on the *LIGHT*  
for your business**

***Phone 237 7577 NOW***



# STATISTICAL SUMMARY

Indicator	Period	SOUTH AUSTRALIA				AUSTRALIA				SA as a % of Australia	Source index
		No.	% change from		No.	% change from					
			Previous period	Same previous year		Previous period	Same previous year				
<b>State Accounts</b>											
Gross domestic product (i)											
Current prices	\$m	June qtr 96	8,710	3.7	5.8	122,332	3.2	6.5	7.1	1	
1989-90 prices trend	\$m	June qtr 96	7,607	0.7	4.7	109,367	0.7	4.2	7.0	1	
Wages, salaries and supplements											
Current prices trend	\$m	June qtr 96	4,391	0.8	4.8	61,122	1.2	6.2	7.2	1	
Private final consumption expenditure											
Current prices	\$m	June qtr 96	5,722	3.1	3.8	76,344	3.6	6.2	7.5	1	
1989-90 prices trend	\$m	June qtr 96	4,946	0.4	2.1	66,217	0.8	4.3	7.5	1	
Private gross fixed capital expenditure											
1989-90 prices trend	\$m	June qtr 96	945	2.8	-1.2	18,661	1.8	3.0	5.1	1	
<b>International Accounts</b>											
Exports (excluding re-exports)	\$m	Jul 96	349.7	0.5	15.7	6,177.2	2.7	3.5	5.7	2	
Imports	\$m	Jul 96	265.4	1.5	-7.4	6,836.2	17.4	-0.4	3.9	2	
<b>Consumption and Investment</b>											
Retail Turnover											
Current prices original	\$m	Jul 96	758.7	4.4	4.0	10,148.8	5.1	7.4	7.5	3	
Current prices trend	\$m	Jul 96	783.4	0.9	2.4	10,304.2	0.4	5.2	7.6	3	
1989-90 prices original	\$m	Jun qtr 96	1,877.1	3.6	0.3	24,877.4	1.4	2.8	7.5	3	
New motor vehicle registrations											
Original	No.	Jul 96	3,456	-12.1	15.5	54,998	-13.7	3.9	6.3	4	
Trend	No.	Jul 96	3,521	-1.8	0.8	54,891	-0.3	3.3	6.4	4	
Takings, licensed hotels, motels and guest houses with facilities											
Private new capital expenditure	\$m	Jun qtr 96	39.1	-6.7	9.3	n.y.a.	n.y.a.	n.y.a.	n.y.a.	5	
Current prices original	\$m	Jun qtr 96	513	36.8	3.8	11,129	33.4	18.5	4.6	6	
Current prices trend	\$m	Jun qtr 96	476	4.6	8.7	10,228	6.6	15.3	4.7	6	
Private new capital expenditure	\$m	1995-96	1,783	..	-15.3	37,829	..	10.2	4.7	6	
Expected private new capital expenditure	\$m	1996-97	1,491	..	-20.2	39,478	..	3.1	3.8	6	
<b>Production</b>											
Dwelling unit approvals											
Original	No.	Jul 96	528	21.1	-8.3	11,747	21.5	2.3	4.5	7	
Trend	No.	Jul 96	449	0.4	-19.5	10,375	0.2	-7.0	4.3	7	
New dwelling units commenced	No.	Jun qtr 96	1,308	1.9	-25.3	29,829	6.7	-17.4	4.4	8a	
Value of non-residential building approvals	\$m	Jul 96	41.9	55.7	15.4	873.6	2.8	42.5	4.8	7	
Value of total building activity											
Commenced	\$m	Mar qtr 96	271.9	-5.4	-5.1	6,074.8	-0.6	-11.3	4.5	8	
Work done	\$m	Mar qtr 96	266.1	-18.8	-16.2	5,829.9	-18.3	-8.8	4.6	8	
Work yet to be done	\$m	Mar qtr 96	320.6	3.8	13.0	8,793.4	5.7	-8.9	3.6	8	
Value of engineering construction work done	\$m	Mar qtr 96	198.8	17.9	26.6	3,446.2	-8.6	14.2	5.8	9	
Manufacturing production											
Electricity (SA and NT)	mill. kWh	Jul 96	805	2.1	-8.3	15,349	6.8	-0.9	5.2	10	
Cheese	tonnes	Jun 96	1,963	-9.7	-10.0	11,755	-27.1	2.1	16.7	10	
Red meat	tonnes	Jul 96	13,068	1.4	37.8	303,043	53.3	52.6	4.3	11	
Mineral exploration expenditure (other than for petroleum)	\$m	Mar 96 qtr	5.1	-22.7	10.9	218.2	-4.8	14.7	2.3	12	



Indicator	Period	SOUTH AUSTRALIA			AUSTRALIA			SA as a % of Australia	Source index
		No.	% change from		No.	% change from			
			Previous period	Same period previous year		Previous period	Same period previous year		
<b>Prices</b>									
CPI - All groups	1989-90=10( Jun qtr 96	122.0	0.3	2.7	119.8	0.7	3.1	..	13
Price index of materials used in house building	1989-90=10( Jul 96	119.3	0.8	0.5	115.5	0.0	-0.8	..	14
Price index of materials used in building other than houses	1989-90=10( Jul 96	112.9	0.0	0.5	112.6	-0.1	0.2	..	15
Price index of established houses	1989-90=10( Jun. qtr 96	107.9	0.2	-3.0	113.6	1.2	1.1	..	16
Price index of project homes	1989-90=10( Jun. qtr 96	112.1	-0.9	-2.2	109.6	0.1	0.8	..	16
<b>Labour Force and Demography</b>									
Population (resident at end qtr)	'000 Mar qtr 96	1,477.7	0.1	0.2	18,238.6	0.4	1.4	8.1	17
Labour force									
Original	'000 Aug 96	727.4	-0.5	0.4	9,090.8	-0.2	1.7	8.0	18
Trend	'000 Aug 96	729.8	0.0	0.3	9,142.6	0.2	1.3	8.0	18
Employed persons									
Original	'000 Aug 96	663.3	-1.1	0.9	8,319.7	-0.7	1.2	8.0	18
Trend	'000 Aug 96	661.8	0.0	0.8	8,358.2	0.2	1.1	7.9	18
Participation rate									
Original (a)	% Aug 96	61.8	-0.5	-0.1	63.2	-0.2	0.1	..	18
Trend (a)	% Aug 96	62.0	0.0	-0.1	63.6	0.1	-0.1	..	18
Unemployment rate									
Original (a)	% Aug 96	8.8	6.8	-0.5	8.5	0.5	0.4	..	18
Trend (a)	% Aug 96	9.3	0.0	-0.4	8.6	0.0	0.2	..	18
Job vacancies	'000 May 96	2.4	-11.1	-27.3	53.6	-16.1	-0.2	4.5	19
Average weekly overtime per employee	hours May 96	1.1	21.8	-9.4	1.1	0.9	-4.2	..	19
Industrial disputes	'000 working days lost Jun 96	5.0	-52.8	233.3	133.4	-18.7	241.2	3.7	20
Short-term overseas visitors arrivals	No. Jun 96	4,525	-17.7	12.9	306,932	17.4	17.4	1.5	21
Short-term resident departures	No. Jun 96	11,101	-2.2	-7.7	261,768	21.2	14.1	4.2	21
<b>Incomes</b>									
Average weekly earnings (full-time adults; ordinary time)									
Original	\$ May 96	633.80	1.2	3.6	672.60	1.0	3.9	..	22
Trend	\$ May 96	634.00	1.4	3.2	670.70	0.8	3.8	..	22
Award rates of pay index (full-time adults, weekly)	Jun.1985=10( Jul 96	148.8	0.1	1.4	146.1	0.1	1.0	..	23
<b>Financial markets</b>									
Secured housing finance	\$m Jul 96	259.7	8.3	-1.2	4,551.4	20.1	18.8	5.7	24
Finance commitments									
Personal	\$m Jul 96	190.8	4.8	-1.0	3,226.0	13.4	14.8	5.9	25
Commercial	\$m Jul 96	n.y.a.	n.y.a.	n.y.a.	n.y.a.	n.y.a.	n.y.a.	n.y.a.	25
Lease	\$m Jul 96	22.8	-27.1	-16.9	745.9	-15.5	22.0	3.1	25
Interest rates									
Banks new housing loans (a)	% Aug 96	..	..	..	8.25	-1.5	-2.3	..	26
Banks business loans (a)									
small, medium sized business	% Aug 96	..	..	..	10.75	-0.5	-0.4	..	26
large business	% Aug 96	..	..	..	10.40	-0.4	-0.3	..	26

(a) Change is shown in terms of percentage points.

# TIME SERIES

## STATE ACCOUNTS AT CURRENT PRICES South Australia

Period	Final consumption expenditure		Gross fixed capital expenditure		State final demand	Gross State product (I)	Wages, salaries and supplements
	Private	Public	Private	Public			
ANNUAL (\$ million)							
1985-86	11,581	3,860	3,162	1,266	19,869	19,301	9,946
1986-87	12,470	4,203	3,255	1,287	21,215	20,609	10,602
1987-88	13,748	4,392	3,964	1,196	23,300	22,828	11,230
1988-89	15,248	4,649	4,151	1,429	25,477	25,526	12,546
1989-90	16,474	5,003	4,488	1,577	27,542	27,969	13,954
1990-91	18,122	5,477	4,234	1,529	29,362	28,429	14,746
1991-92	18,958	5,812	4,021	1,429	30,220	28,719	14,718
1992-93	19,487	5,983	3,972	1,354	30,796	30,149	15,283
1993-94	20,437	6,687	3,957	1,185	32,266	31,951	16,258
1994-95	21,742	6,780	4,878	1,222	34,622	33,030	16,461
1995-96	23,058	6,598	4,003	1,212	34,871	35,192	17,309
PERCENTAGE CHANGE FROM PREVIOUS YEAR							
1986-87	7.7	8.9	2.9	1.7	6.8	6.8	6.6
1987-88	10.2	4.5	21.8	-7.1	9.8	10.8	5.9
1988-89	10.9	5.9	4.7	19.5	9.3	11.8	11.7
1989-90	8.0	7.6	8.1	10.4	8.1	9.6	11.2
1990-91	10.0	9.5	-5.7	-3.0	6.6	1.6	5.7
1991-92	4.6	6.1	-5.0	-6.5	2.9	1.0	-0.2
1992-93	2.8	2.9	-1.2	-5.2	1.9	5.0	3.8
1993-94	4.9	11.8	-0.4	-12.5	4.8	6.0	6.4
1994-95	6.4	1.4	23.3	3.1	7.3	3.4	1.2
1995-96	6.1	-2.7	-17.9	-0.8	0.7	6.5	5.2
QUARTERLY, ORIGINAL (\$ million)							
1993 - 94 -							
December	5,378	1,627	1,008	302	8,315	8,431	4,094
March	4,964	1,505	932	257	7,658	7,785	3,919
June	5,072	1,926	1,042	368	8,408	7,992	4,194
1994 - 95 -							
September	5,295	1,655	1,161	244	8,355	8,096	4,115
December	5,659	1,700	1,567	292	9,218	8,720	4,073
March	5,277	1,559	1,045	320	8,201	7,984	4,050
June	5,511	1,866	1,105	366	8,848	8,230	4,223
1995 - 96 -							
September	5,693	1,653	895	224	8,465	8,211	4,199
December	6,095	1,635	1,133	263	9,126	9,875	4,455
March	5,548	1,515	895	292	8,250	8,396	4,232
June	5,722	1,795	1,080	433	9,030	8,710	4,423
QUARTERLY, TREND (\$ million)							
1993 - 94 -							
December	5,092	1,631	969	303	7,955	7,918	4,017
March	5,145	1,678	970	292	8,085	8,031	4,075
June	5,201	1,695	1,078	282	8,256	8,136	4,102
1994 - 95 -							
September	5,272	1,714	1,226	314	8,505	8,189	4,087
December	5,371	1,712	1,295	317	8,692	8,198	4,077
March	5,490	1,695	1,211	294	8,713	8,256	4,116
June	5,611	1,681	1,063	276	8,649	8,399	4,189
1995 - 96 -							
September	5,703	1,674	983	276	8,636	8,596	4,260
December	5,748	1,667	994	290	8,699	8,750	4,309
March	5,780	1,650	1,007	318	8,755	8,860	4,357
June	5,812	1,627	1,023	336	8,798	8,932	4,391
PERCENTAGE CHANGE FROM PREVIOUS QUARTER, TREND							
1993 - 94 -							
March	1.0	2.9	0.1	-3.6	1.6	1.4	1.4
June	1.1	1.0	11.1	-3.4	2.1	1.3	0.7
1994 - 95 -							
September	1.4	1.1	13.7	11.3	3.0	0.7	-0.4
December	1.9	-0.1	5.6	1.0	2.2	0.1	-0.2
March	2.2	-1.0	-6.5	-7.3	0.2	0.7	1.0
June	2.2	-0.8	-12.2	-6.1	-0.7	1.7	1.8
1995 - 96 -							
September	1.6	-0.4	-7.5	0.0	-0.2	2.3	1.7
December	0.8	-0.4	1.1	5.1	0.7	1.8	1.2
March	0.6	-1.0	1.3	9.7	0.6	1.3	1.1
June	0.6	-1.4	1.6	5.7	0.5	0.8	0.8

**STATE ACCOUNTS AT AVERAGE 1989-90 PRICES**  
**South Australia**

Period	Final consumption expenditure		Gross fixed capital expenditure		State final demand	Gross State product (I)
	Private	Public	Private	Public		
ANNUAL (\$ million)						
1985-86	14,991	4,687	3,858	1,514	25,050	24,974
1986-87	14,958	4,850	3,621	1,442	24,871	25,260
1987-88	15,451	4,877	4,247	1,304	25,879	25,959
1988-89	16,084	4,879	4,279	1,500	26,742	26,720
1989-90	16,474	5,003	4,488	1,577	27,542	27,969
1990-91	17,169	5,210	4,093	1,480	27,592	27,697
1991-92	17,447	5,328	3,849	1,364	27,988	27,023
1992-93	17,486	5,376	3,686	1,277	27,825	28,077
1993-94	18,036	5,711	3,601	1,120	28,468	29,004
1994-95	18,904	5,837	4,446	1,150	30,337	28,747
1995-96	19,861	5,599	3,644	1,133	30,057	30,108
PERCENTAGE CHANGE FROM PREVIOUS YEAR						
1986-87	-0.2	3.5	-6.1	-4.8	-0.7	1.1
1987-88	3.3	0.6	17.3	-9.6	4.1	2.8
1988-89	4.1	0.0	0.8	15.0	3.3	2.9
1989-90	2.4	2.5	4.9	5.1	3.0	4.7
1990-91	4.2	4.1	-8.8	-6.2	0.2	-1.0
1991-92	1.6	2.3	-6.0	-7.8	1.4	-2.4
1992-93	0.2	0.9	-4.2	-6.4	-0.6	3.9
1993-94	3.1	6.2	-2.3	-12.3	2.3	3.3
1994-95	4.8	2.2	23.5	2.7	6.6	-0.9
1995-96	5.1	-4.1	-18.0	-1.5	-0.9	4.7
QUARTERLY, ORIGINAL (\$ million)						
1993 - 94 -						
December	4,749	1,385	920	284	7,338	7,872
March	4,378	1,323	844	246	6,791	7,007
June	4,456	1,605	938	348	7,347	7,054
1994 - 95 -						
September	4,637	1,423	1,055	232	7,347	7,071
December	4,937	1,447	1,460	278	8,122	7,710
March	4,568	1,370	936	298	7,172	6,865
June	4,762	1,597	995	342	7,696	7,101
1995 - 96 -						
September	4,878	1,403	813	211	7,305	7,072
December	5,206	1,395	1,004	247	7,852	8,484
March	4,721	1,291	821	273	7,106	7,152
June	4,876	1,510	1,006	402	7,794	7,400
QUARTERLY, TREND (\$ million)						
1993 - 94 -						
December	4,488	1,411	885	287	7,086	7,243
March	4,518	1,447	880	278	7,129	7,256
June	4,561	1,458	976	268	7,259	7,242
1994 - 95 -						
September	4,620	1,447	1,121	277	7,478	7,187
December	4,684	1,480	1,186	297	7,640	7,131
March	4,762	1,483	1,101	297	7,629	7,160
June	4,843	1,436	956	275	7,525	7,265
1995 - 96 -						
September	4,897	1,429	880	259	7,466	7,395
December	4,914	1,416	896	271	7,492	7,483
March	4,928	1,398	919	297	7,535	7,554
June	4,946	1,357	945	311	7,577	7,607
PERCENTAGE CHANGE FROM PREVIOUS QUARTER, TREND						
1993 - 94 -						
March	0.7	2.6	-0.6	-3.1	0.6	0.2
June	1.0	0.8	10.9	-3.6	1.8	-0.2
1994 - 95 -						
September	1.3	-0.8	14.9	3.4	3.0	-0.8
December	1.4	2.3	5.8	7.2	2.2	-0.8
March	1.7	0.2	-7.2	0.0	-0.1	0.4
June	1.7	-3.2	-13.2	-7.4	-1.4	1.5
1995 - 96 -						
September	1.1	-0.5	-7.9	-5.8	-0.8	1.8
December	0.3	-0.9	1.8	4.6	0.3	1.2
March	0.3	-1.3	2.6	9.6	0.6	0.9
June	0.4	-2.9	2.8	4.7	0.6	0.7

**MERCHANDISE EXPORTS BY SELECTED COMMODITY GROUP**  
**Final stage of production in South Australia**  
**(\$'000)**

Period	Meat and meat preparations	Cereals and cereal preparations	Wine	Wool and sheepskins	Machinery	Metals and metal	Fish and crustaceans	Road vehicles, parts and accessories	Petroleum and petroleum products	Total
						manu- factures				
ANNUAL										
1988-89	181,058	475,481	71,474	415,098	104,163	239,656	95,720	124,815	189,679	2,451,372
1989-90	244,374	724,369	73,484	285,650	111,944	371,136	111,760	161,704	188,105	2,828,091
1990-91	234,299	587,199	123,567	257,576	152,940	433,341	122,604	117,218	291,507	3,007,137
1991-92	270,237	565,582	165,914	351,096	176,536	489,030	147,532	137,091	341,477	3,431,139
1992-93	282,181	573,375	192,255	318,989	211,426	490,594	154,608	338,359	372,445	3,760,602
1993-94	324,796	436,517	238,366	290,963	223,760	462,355	186,861	351,229	276,473	3,889,783
1994-95	307,785	261,052	250,527	301,645	301,645	571,094	191,386	332,321	285,310	3,829,327
1995-96	244,371	712,865	317,309	239,607	338,899	610,357	196,257	249,175	220,495	4,496,909
MONTHLY										
1994 - 95 -										
May	28,706	17,053	21,053	23,984	29,203	67,729	24,111	32,752	11,789	342,580
June	22,987	36,945	22,354	20,141	32,091	35,726	13,305	30,464	38,853	327,719
1995 - 96 -										
July	14,901	31,637	25,475	21,658	29,777	30,070	20,641	23,893	14,477	302,270
August	13,129	13,343	25,116	9,231	32,614	56,823	14,318	24,548	23,707	327,668
September	19,591	15,547	36,583	17,746	22,874	53,244	11,704	21,018	17,940	289,169
October	23,556	24,906	28,030	26,785	24,443	52,246	19,427	21,398	14,316	304,371
November	26,104	30,267	16,987	21,284	24,023	43,553	18,840	24,723	19,084	316,946
December	29,693	88,006	26,619	27,775	29,845	72,202	17,240	26,274	17,869	482,732
January	19,108	91,819	15,990	19,531	19,053	48,457	19,458	6,120	7,998	399,411
February	23,461	97,073	24,498	16,038	28,461	51,283	17,828	16,490	31,446	494,804
March	24,399	123,123	29,601	19,495	38,094	58,075	19,701	24,974	5,211	469,876
April	19,866	65,951	28,160	20,761	29,836	35,488	11,760	21,088	37,852	364,440
May	17,170	98,946	25,619	18,328	29,964	55,702	13,934	20,508	18,602	397,217
June	13,392	32,248	34,631	20,973	29,916	53,215	11,403	18,140	11,992	348,004
1996 - 97 -										
July	10,953	58,142	28,170	16,247	27,952	32,540	9,522	42,183	23,102	349,728

**MERCHANDISE EXPORTS BY SELECTED COUNTRIES**  
**Final stage of production in South Australia**  
**(\$'000)**

Period	European Community				New Zealand	East Asia				Total East Asia
	United States	Middle East	United Kingdom	Total European Community		Japan	China	Hong Kong	ASEAN	
ANNUAL										
1988-89	184,903	397,324	108,635	355,669	230,263	390,207	51,975	55,474	240,507	869,226
1989-90	229,169	551,953	121,319	412,855	289,970	359,643	86,303	49,273	277,659	929,209
1990-91	321,032	325,450	186,353	480,714	179,193	438,970	146,434	80,640	403,754	1,284,576
1991-92	300,139	381,761	220,048	550,258	214,522	647,674	148,308	108,583	437,670	1,627,108
1992-93	352,764	314,049	237,520	594,701	288,421	649,684	208,135	171,803	487,174	1,820,065
1993-94	393,611	280,499	263,092	571,047	311,999	625,481	220,211	165,163	533,977	1,898,975
1994-95	329,878	184,342	246,118	553,051	376,279	682,936	177,875	193,014	551,433	2,004,012
1995-96	278,788	525,146	287,558	691,723	374,332	678,541	293,132	201,480	571,789	2,060,952
MONTHLY										
1994 - 95 -										
May	26,307	3,686	16,174	54,304	34,696	76,513	13,535	13,475	39,389	194,315
June	25,381	25,247	17,095	40,679	28,106	66,479	13,411	18,932	52,264	179,796
1995 - 96 -										
July	31,451	28,883	20,329	40,044	32,696	50,953	18,583	17,047	35,778	143,135
August	22,682	4,945	30,566	62,804	33,608	63,308	9,536	13,467	59,411	166,467
September	23,085	8,565	25,361	62,544	38,618	44,063	10,067	8,898	31,239	123,733
October	19,529	14,689	22,775	56,352	29,954	53,894	22,611	12,689	52,782	160,841
November	16,581	39,009	11,481	29,406	35,626	55,812	15,051	16,409	57,338	172,468
December	27,917	110,671	22,009	66,804	35,281	49,304	17,528	20,841	77,169	187,783
January	19,706	84,056	12,778	44,743	19,029	72,074	29,107	16,119	32,921	187,412
February	23,556	107,885	31,325	78,447	27,767	57,812	37,040	19,718	61,310	202,869
March	24,868	51,582	25,976	65,053	36,571	58,325	58,657	21,622	34,763	203,371
April	21,813	38,851	22,900	43,773	26,357	53,269	36,243	18,290	50,276	187,625
May	20,098	8,796	22,925	60,080	33,162	68,735	28,399	21,158	38,355	184,180
June	27,522	27,213	39,133	81,673	25,664	50,992	10,310	15,222	40,448	141,069
1996 - 97 -										
July	25,435	19,381	23,062	38,906	57,586	32,748	13,337	13,726	60,481	145,237

**MERCHANDISE EXPORTS BY INDUSTRY OF ORIGIN**  
**Final stage of production in South Australia**  
**(\$'000)**

Period	Agriculture, forestry and fishing	Mining	Manufacturing					Other manu- facturing	Other industries/ confidential	Total
			Food, beverages and tobacco	Petroleum, coal, chemical associated product	Metal product	Machinery and equipment				
ANNUAL										
1988-89	891,978	107,269	515,739	176,037	260,978	270,215	96,203	132,953	2,451,372	
1989-90	979,463	133,318	583,544	133,078	406,144	320,349	99,984	172,210	2,828,091	
1990-91	804,154	120,930	599,030	264,813	474,541	336,500	155,351	251,818	3,007,137	
1991-92	882,011	248,848	702,148	201,681	541,522	381,737	178,485	294,709	3,431,139	
1992-93	883,725	294,586	766,518	195,387	509,303	641,930	178,726	290,427	3,760,602	
1993-94	733,014	245,247	884,737	180,147	475,060	665,066	208,573	497,938	3,889,783	
1994-95	592,129	268,537	886,354	186,661	584,838	711,542	243,314	355,952	3,829,327	
1995-96	1,014,726	232,667	974,603	171,895	638,560	672,572	225,974	565,911	4,496,909	
MONTHLY										
1994 - 95 -										
May	36,328	19,086	85,462	15,098	68,932	70,998	21,398	25,277	342,580	
June	56,847	29,420	76,114	18,461	36,432	71,002	23,019	16,424	327,719	
1995 - 96 -										
July	65,478	7,842	76,785	17,639	30,986	60,392	18,171	24,978	302,270	
August	28,192	32,057	72,851	10,061	57,339	63,519	19,856	43,793	327,668	
September	34,304	11,819	86,704	16,508	54,378	50,068	18,498	16,890	289,169	
October	52,612	10,747	85,726	12,266	53,132	53,346	16,776	19,767	304,371	
November	57,292	27,650	67,517	9,630	44,699	53,265	20,745	36,148	316,946	
December	118,496	8,265	98,215	20,005	79,849	63,869	21,986	72,047	482,732	
January	119,115	34,731	77,337	8,181	49,325	35,778	17,538	57,407	399,411	
February	122,490	24,558	84,791	16,652	53,893	50,806	16,447	125,167	494,804	
March	156,080	12,291	89,910	14,432	59,128	70,490	21,525	46,019	469,876	
April	94,301	28,543	74,666	16,616	38,555	57,023	18,305	36,433	364,440	
May	104,879	23,538	83,384	18,808	58,721	58,973	17,828	31,287	397,217	
June	61,486	10,626	76,717	11,297	58,556	55,045	18,300	55,976	348,004	
1996 - 97 -										
July	89,514	25,270	62,575	16,789	32,714	77,510	17,436	27,919	349,728	

**MERCHANDISE IMPORTS BY SELECTED COMMODITY GROUP**  
**Goods released form Customs control in South Australia**  
**(\$'000)**

Period	Food, beverages and tobacco	Petroleum and petroleum products	Chemicals	Metals and metal manu- factures		Machinery	Road vehicles, parts and accessories	Other manu- factured goods	Total
				Textiles					
ANNUAL									
1988-89	60,395	169,397	144,766	47,592	135,225	411,092	415,120	344,344	1,861,622
1989-90	71,796	203,654	167,154	49,249	147,969	462,885	414,800	399,437	2,050,024
1990-91	78,926	425,262	140,894	49,087	135,772	515,226	372,603	366,304	2,193,851
1991-92	82,095	362,777	153,574	62,884	151,165	523,848	435,121	513,012	2,396,954
1992-93	91,756	570,334	186,001	57,434	255,924	609,212	661,714	521,723	3,068,122
1993-94	99,177	404,626	200,225	60,172	160,937	595,238	663,617	484,590	2,803,446
1994-95	115,930	330,430	220,536	64,524	214,432	695,038	749,658	563,368	3,099,510
1995-96	118,236	346,397	253,532	76,926	213,488	675,871	546,453	728,101	3,113,779
MONTHLY									
1994 - 95 -									
May	11,288	25,162	33,903	5,641	22,360	52,820	58,216	44,756	267,546
June	8,327	24,353	24,351	5,639	28,341	63,713	57,414	50,150	275,460
1995 - 96 -									
July	9,188	51,035	22,738	7,385	16,289	58,132	53,294	47,464	286,607
August	9,608	23,010	28,671	7,480	24,255	67,838	57,785	67,301	299,381
September	10,407	21,085	12,320	7,156	18,140	45,362	39,826	42,134	203,934
October	10,865	21,481	14,044	6,525	18,154	50,105	62,159	61,470	257,264
November	11,322	22,223	18,176	8,716	18,048	61,466	37,229	56,644	243,063
December	11,964	44,318	14,105	4,193	11,216	43,339	48,448	78,622	272,071
January	10,464	23,714	22,404	5,206	16,968	71,580	40,787	52,901	252,230
February	8,386	43,261	20,499	5,920	18,823	49,981	35,606	61,576	254,006
March	8,874	64	35,528	5,560	19,237	54,103	42,833	49,765	242,807
April	9,155	42,010	30,055	6,004	16,164	53,367	47,497	60,587	275,217
May	10,336	32,580	19,675	5,993	17,306	67,816	35,950	63,905	266,218
June	7,669	21,616	15,891	6,718	18,888	52,773	45,012	85,732	261,431
1996 - 97 -									
July	10,310	31,507	13,789	7,477	17,067	67,147	42,448	62,899	265,402

**TURNOVER OF RETAIL ESTABLISHMENTS BY INDUSTRY**  
**South Australia**

<i>Period</i>	<i>Food retailing</i>	<i>Department stores</i>	<i>Clothing and soft good retailing</i>	<i>Household good retailing</i>	<i>Recreational good retailing</i>	<i>Other retailing</i>	<i>Hospitality and services</i>	<i>Total</i>
ANNUAL (\$ million)								
1986-87	2,240.3	893.8	396.8	601.0	229.7	332.3	862.0	5,555.9
1987-88	2,378.5	951.2	416.7	660.8	237.5	367.0	941.6	5,953.3
1988-89	2,534.9	971.8	462.2	726.6	268.5	420.7	1,019.1	6,403.8
1989-90	2,679.8	1,041.1	521.1	782.5	291.6	467.1	1,046.7	6,829.9
1990-91	2,978.2	1,069.0	543.9	778.8	303.9	497.7	1,111.2	7,282.7
1991-92	3,163.1	1,087.4	466.5	792.0	278.7	515.7	1,157.3	7,460.7
1992-93	3,018.5	1,101.5	434.2	783.3	311.2	617.4	1,132.7	7,398.8
1993-94	3,152.3	1,107.8	466.1	849.2	354.9	639.6	1,260.5	7,830.4
1994-95	3,360.7	1,128.7	524.0	881.1	359.0	737.8	1,562.3	8,553.6
1995-96	3,676.0	1,137.3	535.0	944.6	407.0	845.1	1,676.3	9,221.3
MONTHLY, ORIGINAL (\$ million)								
1994 - 95 -								
May	286.6	94.8	46.4	78.4	30.6	64.7	133.9	735.4
June	282.3	86.8	43.4	80.1	28.3	64.4	132.0	717.3
1995 - 96 -								
July	282.2	92.0	41.9	80.2	29.4	65.0	138.9	729.6
August	297.8	86.9	42.7	78.6	30.2	69.9	138.7	744.8
September	301.0	84.0	40.8	72.4	31.0	72.9	145.4	747.5
October	305.4	92.0	45.4	81.4	32.3	70.1	147.4	774.0
November	322.2	105.0	48.0	80.7	36.1	72.0	150.7	814.7
December	360.9	174.5	67.9	100.3	51.4	92.4	177.0	1,024.4
January	289.6	80.2	44.7	77.9	34.4	66.2	131.5	724.5
February	288.2	73.2	37.7	71.1	32.7	65.8	122.7	691.4
March	306.7	80.8	40.0	79.1	34.1	68.4	128.2	737.3
April	300.2	90.6	42.5	73.5	32.6	64.4	134.6	738.4
May	321.5	91.9	42.4	76.1	32.1	72.4	131.7	768.1
June	300.3	86.2	41.0	73.3	30.7	65.6	129.5	726.6
1996 - 97 -								
July	319.4	92.0	43.4	79.0	35.8	62.5	126.6	758.7
MONTHLY, TREND (\$ million)								
1994 - 95 -								
May	290.0	95.8	44.6	78.9	30.9	66.7	144.6	751.6
June	292.9	96.0	44.1	79.8	31.3	68.1	146.5	758.6
1995 - 96 -								
July	297.0	95.7	43.8	79.9	31.7	69.1	147.7	764.8
August	301.5	95.1	43.9	79.3	32.3	69.7	148.0	769.7
September	305.2	94.5	44.6	78.4	33.0	69.9	146.8	772.3
October	306.9	94.1	45.7	77.7	33.7	69.8	144.0	772.0
November	306.4	93.9	46.8	77.6	34.3	69.8	140.0	769.0
December	304.3	94.1	47.3	78.2	34.7	70.1	135.7	764.5
January	302.2	94.3	46.9	79.0	34.7	70.6	132.5	760.3
February	302.0	94.3	45.7	79.6	34.4	71.3	131.4	758.7
March	304.4	94.0	44.1	79.8	34.2	71.6	132.3	760.4
April	308.7	94.0	42.7	79.5	34.3	71.2	134.4	764.7
May	313.7	94.3	41.8	78.9	34.6	70.3	136.7	770.3
June	318.8	94.9	41.4	78.3	35.1	69.2	138.7	776.3
1996 - 97 -								
July	323.6	95.9	41.3	77.8	35.8	68.1	140.9	783.4
PERCENTAGE CHANGE FROM PREVIOUS MONTH, TREND								
1994 - 95 -								
June	1.0	0.2	-1.1	1.1	1.3	2.1	1.3	0.9
1995 - 96 -								
July	1.4	-0.3	-0.7	0.1	1.3	1.5	0.8	0.8
August	1.5	-0.6	0.2	-0.8	1.9	0.9	0.2	0.6
September	1.2	-0.6	1.6	-1.1	2.2	0.3	-0.8	0.3
October	0.6	-0.4	2.5	-0.9	2.1	-0.1	-1.9	0.0
November	-0.2	-0.2	2.4	-0.1	1.8	0.0	-2.8	-0.4
December	-0.7	0.2	1.1	0.8	1.2	0.4	-3.1	-0.6
January	-0.7	0.2	-0.8	1.0	0.0	0.7	-2.4	-0.5
February	-0.1	0.0	-2.6	0.8	-0.9	1.0	-0.8	-0.2
March	0.8	-0.3	-3.5	0.3	-0.6	0.4	0.7	0.2
April	1.4	0.0	-3.2	-0.4	0.3	-0.6	1.6	0.6
May	1.6	0.3	-2.1	-0.8	0.9	-1.3	1.7	0.7
June	1.6	0.6	-1.0	-0.8	1.4	-1.6	1.5	0.8
1996 - 97 -								
July	1.5	1.1	-0.2	-0.6	2.0	-1.6	1.6	0.9

**NEW MOTOR VEHICLE REGISTRATIONS BY TYPE OF VEHICLE**  
**South Australia**

Period	Original			Seasonally adjusted			Trend estimate		
	Passenger Vehicles	Other vehicles	Total	Passenger Vehicles	Other vehicles	Total	Passenger Vehicles	Other vehicles	Total
ANNUAL									
1985-86	40,840	9,620	50,460	..	..	..	..	..	..
1986-87	29,788	6,430	36,218	..	..	..	..	..	..
1987-88	29,915	5,775	35,690	..	..	..	..	..	..
1988-89	31,920	6,816	38,736	..	..	..	..	..	..
1989-90	35,211	7,808	43,019	..	..	..	..	..	..
1990-91	34,753	6,619	41,372	..	..	..	..	..	..
1991-92	32,351	5,333	37,684	..	..	..	..	..	..
1992-93	32,894	5,577	38,471	..	..	..	..	..	..
1993-94	32,806	5,781	38,587	..	..	..	..	..	..
1994-95	35,830	6,736	42,566	..	..	..	..	..	..
1995-96	36,067	6,828	42,895	..	..	..	..	..	..
PERCENTAGE CHANGE FROM PREVIOUS YEAR									
1986-87	-27.1	-33.2	-28.2	..	..	..	..	..	..
1987-88	0.4	-10.2	-1.5	..	..	..	..	..	..
1988-89	6.7	18.0	8.5	..	..	..	..	..	..
1989-90	10.3	14.6	11.1	..	..	..	..	..	..
1990-91	-1.3	-15.2	-3.8	..	..	..	..	..	..
1991-92	-6.9	-19.4	-8.9	..	..	..	..	..	..
1992-93	1.7	4.6	2.1	..	..	..	..	..	..
1993-94	-0.3	3.7	0.3	..	..	..	..	..	..
1994-95	9.2	16.5	10.3	..	..	..	..	..	..
1995-96	0.7	1.4	0.8	..	..	..	..	..	..
MONTHLY									
1994 - 95 -									
May	3,647	695	4,342	3,512	633	4,145	3,008	586	3,594
June	3,369	815	4,184	3,059	643	3,702	2,970	573	3,543
1995 - 96 -									
July	2,546	446	2,992	2,635	453	3,088	2,941	553	3,493
August	3,444	519	3,963	3,075	549	3,624	2,925	530	3,455
September	2,905	547	3,452	2,856	563	3,419	2,924	518	3,441
October	3,217	430	3,647	2,992	456	3,448	2,947	519	3,466
November	3,187	564	3,751	2,933	508	3,441	2,999	531	3,531
December	2,987	565	3,552	3,186	577	3,763	3,063	550	3,613
January	2,350	479	2,829	2,905	602	3,508	3,117	572	3,688
February	3,244	588	3,832	3,259	621	3,880	3,145	592	3,737
March	3,271	596	3,867	3,243	534	3,778	3,139	610	3,749
April	2,745	541	3,286	3,135	629	3,765	3,097	621	3,718
May	3,080	712	3,792	2,951	653	3,604	3,032	628	3,660
June	3,091	841	3,932	3,040	696	3,737	2,955	632	3,586
1996 - 97 -									
July	2,862	595	3,456	2,700	561	3,262	2,889	632	3,521
PERCENTAGE CHANGE FROM PREVIOUS MONTH									
1994 - 95 -									
June	-7.6	17.3	-3.6	-12.9	1.6	-10.7	-1.3	-2.2	-1.4
1995 - 96 -									
July	-24.4	-45.3	-28.5	-13.9	-29.5	-16.6	-1.0	-3.5	-1.4
August	35.3	16.4	32.5	16.7	21.2	17.4	-0.5	-4.2	-1.1
September	-15.7	5.4	-12.9	-7.1	2.6	-5.7	0.0	-2.3	-0.4
October	10.7	-21.4	5.6	4.8	-19.0	0.8	0.8	0.2	0.7
November	-0.9	31.2	2.9	-2.0	11.4	-0.2	1.8	2.3	1.9
December	-6.3	0.2	-5.3	8.6	13.6	9.4	2.1	3.6	2.3
January	-21.3	-15.2	-20.4	-8.8	4.3	-6.8	1.8	4.0	2.1
February	38.0	22.8	35.5	12.2	3.2	10.6	0.9	3.5	1.3
March	0.8	1.4	0.9	-0.5	-14.0	-2.6	-0.2	3.0	0.3
April	-16.1	-9.2	-15.0	-3.3	17.8	-0.3	-1.3	1.8	-0.8
May	12.2	31.6	15.4	-5.9	3.8	-4.3	-2.1	1.1	-1.6
June	0.4	18.1	3.7	3.0	6.6	3.7	-2.5	0.6	-2.0
1996 - 97 -									
July	-7.4	-29.3	-12.1	-11.2	-19.4	-12.7	-2.2	0.0	-1.8

**ACTUAL PRIVATE NEW CAPITAL EXPENDITURE BY SELECTED INDUSTRY AND TYPE OF ASSET**  
**South Australia**

Period	Industry			Total	Type of asset		
	Mining	Manufacturing	Other selected industries		New buildings and structures	Equipment, plant and machinery	
ANNUAL (\$ million)							
1990-91	122	742	988	1,852	628	1,224	
1991-92	193	763	668	1,625	392	1,233	
1992-93	218	564	739	1,522	416	1,105	
1993-94	97	613	773	1,484	356	1,128	
1994-95	115	829	1,162	2,106	351	1,755	
1995-96	192	730	861	1,783	337	1,477	
PERCENTAGE CHANGE FROM PREVIOUS YEAR							
1991-92	58.4	2.9	-32.3	-12.2	-37.5	0.8	
1992-93	12.8	-26.1	10.6	-6.4	6.1	-10.4	
1993-94	-55.5	8.7	4.6	-2.5	-14.5	2.0	
1994-95	18.3	35.2	50.3	41.9	-1.4	55.6	
1995-96	67.0	-11.9	-25.9	-15.3	-4.0	-15.8	
QUARTERLY, ORIGINAL (\$ million)							
1993 - 94 - June	22	207	169	399	62	336	
1994 - 95 - September	14	129	338	481	151	330	
December	40	226	419	684	77	607	
March	22	202	222	446	65	382	
June	38	272	183	494	58	436	
1995 - 96 - September	34	158	168	360	70	290	
December	47	207	280	536	87	449	
March	48	162	165	375	72	304	
June	62	203	248	513	108	405	
PERCENTAGE CHANGE FROM PREVIOUS QUARTER, ORIGINAL							
1994 - 95 - September	-35.4	-37.9	99.9	20.8	141.7	-1.7	
December	175.0	75.6	23.8	42.2	-48.7	83.7	
March	-45.7	-10.5	-46.9	-34.8	-16.4	-37.1	
June	76.7	34.4	-17.7	10.8	-9.6	14.3	
1995 - 96 - September	-9.7	-42.0	-8.4	-27.3	19.7	-33.5	
December	38.2	31.5	67.4	49.2	24.7	55.0	
March	0.8	-21.8	-41.0	-30.1	-17.9	-32.4	
June	29.3	25.1	50.0	36.8	51.1	33.2	
QUARTERLY, TREND (\$ million)							
1993 - 94 - June	n.a.	n.a.	n.a.	427	107	320	
1994 - 95 - September				513	105	407	
December				556	89	468	
March				523	71	452	
June				462	65	397	
1995 - 96 - September				429	69	360	
December				438	76	363	
March				455	92	363	
June				476	113	363	
PERCENTAGE CHANGE FROM PREVIOUS QUARTER, TREND							
1994 - 95 - September	..	..	..	20.1	-1.9	27.2	
December				8.4	-15.2	15.0	
March				-5.9	-20.2	-3.4	
June				-11.7	-8.5	-12.2	
1995 - 96 - September				-7.1	6.2	-9.3	
December				2.1	10.1	0.8	
March				3.9	21.1	0.0	
June				4.6	22.8	0.0	



**TOURIST ACCOMMODATION**  
**South Australia**

Period	Hotels, motels, guesthouses with facilities			Holiday flats, units and houses			Short-term caravan parks		
	Number of guest rooms	Room occupancy (per cent)	Takings (\$'000)	Number of flats, units and houses	Unit occupancy (per cent)	Takings (\$'000)	Number of sites	Site occupancy (per cent)	Takings (\$'000)
ANNUAL									
1986-87	8,497	52.9	79,254	n.a.	n.a.	n.a.	18,773	18.1	12,647
1987-88	9,156	50.8	89,321	1,105	45.4	8,109	18,926	17.8	13,248
1988-89	9,396	50.5	102,737	1,171	45.8	9,792	19,195	17.4	14,711
1989-90	10,316	52.0	121,788	1,113	48.4	11,381	19,847	18.4	17,174
1990-91	10,445	48.0	128,634	1,210	43.9	10,339	19,794	17.7	18,102
1991-92	10,745	46.6	130,578	1,302	40.4	10,492	20,601	17.1	19,111
1992-93	10,632	46.5	129,882	1,338	40.2	10,740	20,038	22.3	20,113
1993-94	10,597	48.6	138,782	1,338	40.9	11,700	19,591	23.7	20,790
1994-95	10,594	51.3	149,698	1,342	40.0	11,644	20,175	24.5	22,537
1995-96	10,772	52.4	161,136	1,356	41.5	12,844	20,187	24.9	23,578
PERCENTAGE CHANGE FROM PREVIOUS YEAR									
1987-88	7.8	..	12.7	n.a.	..	n.a.	0.8	..	4.8
1988-89	2.6	..	15.0	6.0	..	20.8	1.4	..	11.0
1989-90	9.8	..	18.5	-5.0	..	16.2	3.4	..	16.7
1990-91	1.3	..	5.6	8.7	..	-9.2	-0.3	..	5.4
1991-92	2.9	..	1.5	7.6	..	1.5	4.1	..	5.6
1992-93	-1.1	..	-0.5	2.8	..	2.4	-2.7	..	5.2
1993-94	-0.3	..	6.9	0.0	..	8.9	-2.2	..	3.4
1994-95	0.0	..	7.9	0.3	..	-0.5	3.0	..	8.4
1995-96	1.7	..	7.6	1.0	..	10.3	0.1	..	4.6
QUARTERLY									
1993 - 94 -									
March	10,625	50.0	35,007	1,321	50.9	3,546	19,606	28.4	6,611
June	10,597	47.4	32,547	1,338	36.1	2,313	19,591	24.3	4,893
1994 - 95 -									
September	10,560	48.7	34,734	1,326	34.0	2,418	19,988	20.9	4,211
December	10,608	53.0	41,265	1,360	40.0	3,000	20,126	24.5	5,681
March	10,603	53.4	37,897	1,337	50.1	3,776	20,132	28.4	7,047
June	10,605	50.0	35,802	1,346	35.9	2,451	20,452	24.3	5,597
1995 - 96 -									
September	10,703	50.3	37,077	1,289	32.4	2,273	20,350	22.3	4,809
December	10,763	52.9	42,999	1,297	40.3	3,120	20,123	24.5	6,103
March	10,757	55.1	41,938	1,388	54.9	4,512	20,154	27.8	6,931
June	10,865	51.4	39,121	1,451	38.0	2,940	20,122	25.0	5,736
PERCENTAGE CHANGE FROM PREVIOUS QUARTER									
1993 - 94 -									
June	-0.3	..	-7.0	1.3	..	-34.8	-0.1	..	-26.0
1994 - 95 -									
September	-0.3	..	6.7	-0.9	..	4.5	2.0	..	-13.9
December	0.5	..	18.8	2.6	..	24.1	0.7	..	34.9
March	0.0	..	-8.2	-1.7	..	25.9	0.0	..	24.0
June	0.0	..	-5.5	0.7	..	-35.1	1.6	..	-20.6
1995 - 96 -									
September	0.9	..	3.6	-4.2	..	-7.3	-0.5	..	-14.1
December	0.6	..	16.0	0.6	..	37.3	-1.1	..	26.9
March	-0.1	..	-2.5	7.0	..	44.6	0.2	..	13.6
June	1.0	..	-6.7	4.5	..	-34.8	-0.2	..	-17.2

**BUILDING APPROVALS**  
**South Australia**

Period	Number of dwelling units				Value (\$ million)			
	Houses		Total(a)		New residential building	Alterations and additions to residential building	Non-residential building	Total building
	Private sector	Total	Private sector	Total				
ANNUAL								
1987-88	6,276	6,900	7,383	9,009	497	94	749	1,340
1988-89	7,526	8,006	9,642	11,238	690	109	895	1,694
1989-90	7,246	7,675	10,180	11,701	733	110	914	1,757
1990-91	8,351	8,633	10,418	11,426	755	119	591	1,465
1991-92	8,613	8,931	10,254	11,290	756	124	627	1,506
1992-93	9,710	10,087	11,548	12,341	841	133	418	1,392
1993-94	9,470	9,901	11,046	11,777	839	122	375	1,336
1994-95	7,757	8,147	9,208	9,762	740	120	493	1,353
1995-96	4,930	5,109	5,760	5,968	469	119	566	1,154
PERCENTAGE CHANGE FROM PREVIOUS YEAR								
1988-89	19.9	16.0	30.6	24.7	38.8	16.0	19.5	26.4
1989-90	-3.7	-4.1	5.6	4.1	6.1	1.2	2.1	3.7
1990-91	15.2	12.5	2.3	-2.4	3.1	8.6	-35.4	-16.6
1991-92	3.1	3.5	-1.6	-1.2	0.1	3.9	6.1	2.8
1992-93	12.7	12.9	12.6	9.3	11.3	7.1	-33.2	-7.6
1993-94	-2.5	-1.8	-4.3	-4.6	-0.2	-8.0	-10.4	-4.0
1994-95	-18.1	-17.7	-16.6	-17.1	-11.8	-1.7	31.5	1.3
1995-96	-36.4	-37.3	-37.4	-38.9	-36.5	-0.7	14.8	-14.7
MONTHLY, ORIGINAL								
1994 - 95 -								
June	513	554	603	646	50.1	9.2	47.9	107.2
1995 - 96 -								
July	445	463	550	576	45.2	9.0	36.3	90.6
August	564	608	623	671	52.3	11.2	31.5	94.9
September	437	467	547	592	45.0	12.1	31.1	88.2
October	415	422	512	519	39.2	10.4	69.2	118.8
November	388	390	525	527	40.8	10.3	33.1	84.2
December	354	367	421	434	34.5	8.9	36.1	79.5
January	299	306	346	355	29.2	8.5	64.4	102.1
February	393	418	461	486	39.6	8.4	16.5	64.5
March	388	393	432	437	36.5	11.4	49.9	97.8
April	380	386	424	430	31.9	8.5	27.5	67.9
May	464	483	486	505	40.8	10.0	143.6	194.3
June	403	406	433	436	34.3	10.5	26.9	71.8
1996 - 97 -								
July	476	481	523	528	42.8	7.7	41.9	92.5
MONTHLY, TREND								
1995 - 96 -								
July	443	470	529	558	n.a.	n.a.	n.a.	n.a.
August	433	461	528	560				
September	424	452	522	555				
October	413	438	510	540				
November	400	422	488	516				
December	393	412	469	493				
January	392	408	454	476				
February	395	409	447	463				
March	403	412	447	457				
April	410	413	450	453				
May	415	414	453	450				
June	420	414	456	447				
1996 - 97 -								
July	427	418	460	449				
PERCENTAGE CHANGE FROM PREVIOUS MONTH, TREND								
1995 - 96 -								
July	3.7	12.4	15.0	24.3	n.a.	n.a.	n.a.	n.a.
August	-2.3	-1.9	-0.2	0.4				
September	-2.1	-2.0	-1.1	-0.9				
October	-2.5	-3.1	-2.3	-2.7				
November	-3.1	-3.7	-4.3	-4.4				
December	-1.8	-2.4	-3.9	-4.5				
January	-0.3	-1.0	-3.2	-3.4				
February	0.8	0.2	-1.5	-2.7				
March	2.0	0.7	0.0	-1.3				
April	1.7	0.2	0.7	-0.9				
May	1.2	0.2	0.7	-0.7				
June	1.2	0.0	0.7	-0.7				
1996 - 97 -								
July	1.7	1.0	0.9	0.4				

(a) Total includes the number of self-contained dwelling units approved as part of the construction of non-residential building and alterations to existing buildings (including conversions to dwelling units).

**BUILDING COMMENCEMENTS**  
**South Australia**

Period	Number of new dwelling units				Value (\$ million)				
	Houses		Total		New residential building	Alterations and additions to residential building	Non-residential building		Total building
	Private sector	Total	Private sector	Total			Private sector	Total	
	ANNUAL								
1984-85	8,502	9,641	11,728	14,205	660.3	66.0	345.6	509.7	1,236.0
1985-86	6,334	7,267	8,805	10,705	558.5	80.9	430.7	602.4	1,241.7
1986-87	5,345	6,458	6,524	8,913	475.7	75.3	430.1	674.4	1,225.4
1987-88	5,664	6,388	6,709	8,443	472.9	92.2	527.2	718.8	1,283.8
1988-89	7,132	7,580	8,822	10,235	646.2	103.7	760.3	964.1	1,709.9
1989-90	6,734	7,174	9,412	10,936	718.2	111.6	669.6	934.2	1,763.9
1990-91	7,863	8,177	9,673	10,821	727.5	118.2	367.1	554.0	1,399.6
1991-92	8,036	8,344	9,608	10,671	727.2	125.1	344.5	607.8	1,460.1
1992-93	9,122	9,416	10,881	11,635	816.2	122.4	205.5	458.7	1,397.2
1993-94	9,159	9,590	10,693	11,481	845.3	126.5	206.9	373.0	1,344.8
1994-95	7,745	8,210	9,084	9,735	765.5	125.3	251.7	518.5	1,409.3
1995-96	4,838	5,074	5,639	5,910	n.y.a.	n.y.a.	n.y.a.	n.y.a.	n.y.a.
QUARTERLY									
1993 - 94 -									
December	2,336	2,395	2,672	2,798	205.4	35.6	60.9	106.6	347.7
March	1,977	2,023	2,406	2,549	188.1	29.8	51.1	97.6	315.4
June	2,235	2,396	2,628	2,880	213.4	30.2	55.2	93.5	337.1
1994 - 95 -									
September	2,413	2,526	2,855	3,083	235.6	34.3	57.0	101.8	371.7
December	2,303	2,435	2,670	2,834	221.1	31.8	52.8	99.5	352.4
March	1,631	1,735	1,934	2,064	167.9	26.4	55.6	92.1	286.4
June	1,396	1,512	1,623	1,752	140.9	32.8	86.3	225.1	398.8
1995 - 96 -									
September	1,398	1,504	1,640	1,760	142.4	29.4	69.5	108.4	280.3
December	1,242	1,295	1,491	1,559	133.9	34.0	85.5	119.5	287.4
March	1,044	1,089	1,237	1,284	109.2	29.8	68.4	132.9	271.9
June	1,155	1,187	1,272	1,308	n.y.a.	n.y.a.	n.y.a.	n.y.a.	n.y.a.

**VALUE OF BUILDING WORK DONE DURING PERIOD**  
**South Australia**

Period	New residential building				Alterations and additions to residential buildings	Non-residential building		Total building	
	Houses		Total			Private sector	Total	Private sector	Total
	Private sector	Total	Private sector	Total	Private sector	Total	Private sector	Total	
ANNUAL (\$ million)									
1984-85	414.4	456.3	542.3	628.7	65.6	285.1	433.4	891.6	1,125.7
1985-86	369.2	411.5	497.9	585.1	78.7	413.6	589.7	988.5	1,253.4
1986-87	310.0	364.8	385.4	492.2	78.4	447.9	645.2	908.1	1,215.8
1987-88	343.8	381.1	391.4	467.7	88.2	551.8	811.2	1,027.0	1,367.1
1988-89	450.2	469.2	538.8	597.0	104.1	657.5	902.2	1,297.3	1,603.3
1989-90	493.8	518.9	657.4	724.9	116.3	743.2	988.6	1,514.0	1,829.8
1990-91	578.3	600.2	713.6	782.3	122.0	621.9	876.6	1,455.4	1,780.8
1991-92	591.5	607.5	693.4	748.5	125.1	310.3	484.1	1,127.5	1,357.6
1992-93	647.2	660.9	743.8	780.6	127.1	297.9	570.9	1,166.3	1,478.6
1993-94	719.1	746.4	828.9	876.3	132.0	217.7	462.1	1,177.2	1,470.4
1994-95	659.6	693.6	766.1	816.4	129.4	271.6	476.9	1,164.3	1,422.7
QUARTERLY (\$ million)									
1993 - 94 -									
March	167.4	172.2	192.3	202.3	32.4	50.2	96.8	274.3	331.5
June	175.7	182.9	204.2	215.3	30.8	53.1	111.0	287.5	357.2
1994 - 95 -									
September	185.6	193.5	215.3	230.8	37.4	63.7	113.5	316.1	381.8
December	185.3	195.7	216.0	231.4	35.6	63.0	117.8	313.1	384.7
March	153.3	159.5	179.5	187.9	25.1	57.2	104.4	261.4	317.4
June	135.3	144.8	155.3	166.3	31.2	87.8	141.3	273.7	338.8
1995 - 96 -									
September	117.9	124.5	138.8	146.6	31.4	72.7	121.7	241.7	299.6
December	119.2	125.6	137.7	144.8	39.9	87.1	142.9	264.7	327.6
March	101.3	105.0	117.5	121.7	26.7	60.2	117.7	204.0	266.1

**PRODUCTION, SELECTED COMMODITIES**  
**South Australia**

Period	Footwear (pairs)	Gas (m megajoules)	Electricity (including NT) ('000 kWh)	Coal (tonnes)	Sawn timber(a) (m <sup>3</sup> )
ANNUAL					
1986-87	2,147,468	82,550	9,666,694	2,435,010	194,458
1987-88	1,982,301	83,101	10,137,144	2,566,347	254,453
1988-89	2,062,085	86,546	10,588,647	2,674,215	292,335
1989-90	1,749,112	85,070	10,665,118	2,921,861	228,156
1990-91	1,837,602	73,265	8,878,357	2,441,040	240,193
1991-92	1,852,890	78,210	10,025,649	2,819,880	271,603
1992-93	1,406,178	83,000	10,226,734	2,753,610	317,096
1993-94	1,382,949	89,382	10,560,251	2,643,000	364,961
1994-95	1,430,417	86,123	10,051,056	2,554,560	392,349
1995-96	n.a.	76,074	8,733,503	2,409,120	413,545
PERCENTAGE CHANGE FROM PREVIOUS YEAR					
1987-88	-7.7	0.7	4.9	5.4	30.9
1988-89	4.0	4.1	4.5	4.2	14.9
1989-90	-15.2	-1.7	0.7	9.3	-22.0
1990-91	5.1	-13.9	-16.8	-16.5	5.3
1991-92	0.8	6.7	12.9	15.5	13.1
1992-93	-24.1	6.1	2.0	-2.4	16.7
1993-94	-1.7	7.7	3.3	-4.0	15.1
1994-95	3.4	-3.6	-4.8	-3.3	7.5
1995-96	n.a.	-11.7	-13.1	-5.7	5.4
MONTHLY/QUARTERLY (b), ORIGINAL					
1994 - 95 -					
May	119,883	7,095	783,073	205,740	..
June	128,896	7,501	820,600	243,720	104,789
1995 - 96 -					
July	116,044	8,342	878,070	227,340	..
August	123,733	7,667	791,871	214,680	..
September	134,797	6,201	685,549	214,200	121,851
October	95,340	6,922	671,726	119,400	..
November	108,312	6,252	665,680	141,660	..
December	89,857	5,126	673,409	208,920	112,148
January	80,341	4,990	713,816	232,020	..
February	124,734	5,548	742,084	233,280	..
March	151,541	6,163	765,278	254,940	88,684
April	101,261	6,088	632,648	159,960	..
May	n.a.	5,728	725,035	186,600	..
June	n.a.	7,047	788,337	216,120	90,862
1996 - 97 -					
July	n.a.	7,478	805,153	242,820	..
PERCENTAGE CHANGE FROM PREVIOUS MONTH/QUARTER (b)					
1994 - 95 -					
June	7.5	5.7	4.8	18.5	11.0
1995 - 96 -					
July	-10.0	11.2	7.0	-6.7	..
August	6.6	-8.1	-9.8	-5.6	..
September	8.9	-19.1	-13.4	-0.2	16.3
October	-29.3	11.6	-2.0	-44.3	..
November	13.6	-9.7	-0.9	18.6	..
December	-17.0	-18.0	1.2	47.5	-8.0
January	-10.6	-2.7	6.0	11.1	..
February	55.3	11.2	4.0	0.5	..
March	21.5	11.1	3.1	9.3	-20.9
April	-33.2	-1.2	-17.3	-37.3	..
May	n.a.	-5.9	14.6	16.7	..
June	n.a.	23.0	8.7	15.8	2.5
1996 - 97 -					
July	n.a.	6.1	2.1	12.4	..

(a) From Australian softwood logs only.

(b) Sawn timber production data available quarterly only.

**PRODUCTION, LIVESTOCK PRODUCTS AND SELECTED COMMODITIES**  
**South Australia**

Period	Chicken	Pigmeat	Beef	Mutton	Lamb	Cheese	Wheat flour, other than self-raising
ANNUAL (tonnes)							
1984-85	35,882	36,508	79,111	35,800	30,136	23,273	74,643
1985-86	34,235	37,432	77,898	41,507	31,485	25,086	73,926
1986-87	33,776	40,761	90,283	43,934	32,416	27,438	80,310
1987-88	34,907	36,671	91,701	45,562	34,335	25,497	91,325
1988-89	32,946	40,364	87,160	42,159	36,203	24,704	96,418
1989-90	35,248	40,815	99,699	50,939	38,052	22,774	88,503
1990-91	31,945	38,644	87,036	65,434	32,038	24,522	83,727
1991-92	36,978	34,538	90,661	72,578	29,941	23,494	81,065
1992-93	38,619	38,153	96,338	65,689	39,334	26,140	87,761
1993-94	40,671	38,394	94,395	71,354	45,199	26,674	84,683
1994-95	39,032	32,063	99,121	66,759	36,147	29,154	80,666
1995-96	37,701	26,711	90,958	52,714	37,829	31,496	97,425
PERCENTAGE CHANGE FROM PREVIOUS YEAR							
1985-86	-4.6	2.5	-1.5	15.9	4.5	7.8	-1.0
1986-87	-1.3	8.9	15.9	5.8	3.0	9.4	8.6
1987-88	3.3	-10.0	1.6	3.7	5.9	-7.1	13.7
1988-89	-5.6	10.1	-5.0	-7.5	5.4	-3.1	5.6
1989-90	7.0	1.1	14.4	20.8	5.1	-7.8	-8.2
1990-91	-9.4	-5.3	-12.7	28.5	-15.8	7.7	-5.4
1991-92	15.8	-10.6	4.2	10.9	-6.5	-4.2	-3.2
1992-93	4.4	10.5	6.3	-9.5	31.4	11.3	8.3
1993-94	5.3	0.6	-2.0	8.6	14.9	2.0	-3.5
1994-95	-4.0	-16.5	5.0	-6.4	-20.0	9.3	-4.7
1995-96	-3.4	-16.7	-8.2	-21.0	4.7	8.0	20.8
MONTHLY (tonnes)							
1994 - 95 -							
May	3,028	3,009	9,421	4,543	2,723	2,098	7,006
June	2,933	2,370	7,723	2,495	2,046	2,138	7,366
1995 - 96 -							
July	3,465	2,181	3,526	1,967	1,799	2,180	6,104
August	2,656	2,614	6,588	3,061	3,204	2,772	7,575
September	3,111	2,240	8,850	4,525	4,212	2,805	7,479
October	2,961	2,125	9,382	5,002	4,455	3,280	6,878
November	3,182	2,608	9,908	7,065	4,008	2,708	8,187
December	3,419	1,907	7,036	3,906	2,691	2,912	8,952
January	3,286	2,092	9,208	5,711	2,693	2,419	6,566
February	2,991	2,297	9,065	6,320	3,213	4,806	8,503
March	3,361	1,899	8,091	5,468	3,385	1,357	8,283
April	3,438	1,985	6,352	3,523	2,965	2,122	7,865
May	2,889	2,646	7,037	3,286	3,282	2,174	14,422
June	2,942	2,136	5,913	2,880	1,921	1,963	6,811
1996 - 97 -							
July	3,110	2,735	5,894	2,485	1,908	n.y.a.	7,099
PERCENTAGE CHANGE FROM PREVIOUS MONTH							
1994 - 95 -							
June	-3.1	-21.2	-18.0	-45.1	-24.9	1.9	5.1
1995 - 96 -							
July	18.1	-8.8	-54.3	-21.1	-12.1	2.0	-17.1
August	-23.3	21.0	86.8	55.6	78.1	27.2	24.1
September	17.1	-14.3	34.3	47.9	31.5	1.2	-1.3
October	-4.8	-5.1	6.0	10.5	5.8	32.8	-8.0
November	7.5	22.8	5.6	41.2	-10.0	-17.5	19.0
December	7.4	-26.9	-29.0	-44.7	-32.9	7.6	9.3
January	-3.9	9.7	30.9	46.2	0.1	-16.9	-26.7
February	-9.0	9.8	-1.6	10.7	19.3	98.7	29.5
March	12.3	-17.3	-10.7	-13.5	5.3	-71.8	-2.6
April	2.3	4.5	-21.5	-35.6	-12.4	56.4	-7.5
May	-16.0	33.3	10.8	-6.7	10.7	2.5	88.2
June	1.9	-19.3	-16.0	-12.4	-41.5	-9.7	-52.8
1996 - 97 -							
July	5.7	28.0	-0.3	-13.7	-0.7	n.y.a.	4.2

**CONSUMER PRICE INDEX: BY GROUP**  
**Adelaide**

Period	Food	Clothing	Housing	Household equipment and operation	Transport- ation	Tobacco and alcohol	Health and personal care	Recreation and education	All groups
ANNUAL AVERAGE (1989-90 = 100)									
1984-85	71.2	68.4	68.3	73.2	68.3	67.2	57.8	68.9	68.9
1985-86	77.0	74.0	73.4	78.9	74.8	72.7	63.2	74.9	74.7
1986-87	83.2	81.8	76.9	84.3	83.0	79.4	75.6	82.1	81.5
1987-88	87.6	88.2	79.5	89.9	88.6	85.7	84.0	89.6	87.0
1988-89	95.2	95.3	87.0	95.1	94.2	92.5	90.8	94.6	93.3
1989-90	100.0	100.0	100.0	100.0	100.0	100.0	100.0	100.0	100.0
1990-91	103.8	103.6	104.1	105.4	107.0	112.0	113.4	104.8	106.2
1991-92	106.0	105.3	100.4	107.5	110.5	118.6	127.8	107.7	108.9
1992-93	109.3	107.0	94.3	107.6	115.0	131.2	134.9	110.7	111.2
1993-94	111.7	106.6	92.1	108.0	117.8	141.5	142.7	113.7	113.4
1994-95	115.1	104.9	97.8	109.2	120.2	148.9	151.3	116.3	116.9
1995-96	118.2	105.1	103.6	112.1	124.5	160.1	158.9	118.0	121.2
PERCENTAGE CHANGE FROM PREVIOUS YEAR, ANNUAL AVERAGE									
1985-86	8.1	8.2	7.5	7.8	9.5	8.2	9.3	8.7	8.4
1986-87	8.1	10.5	4.8	6.8	11.0	9.2	19.6	9.6	9.1
1987-88	5.3	7.8	3.4	6.6	6.7	7.9	11.1	9.1	6.7
1988-89	8.7	8.0	9.4	5.8	6.3	7.9	8.1	5.6	7.2
1989-90	5.0	4.9	14.9	5.2	6.2	8.1	10.1	5.7	7.2
1990-91	3.8	3.6	4.1	5.4	7.0	12.0	13.4	4.8	6.2
1991-92	2.1	1.6	-3.6	2.0	3.3	5.9	12.7	2.8	2.5
1992-93	3.1	1.6	-6.1	0.1	4.1	10.6	5.6	2.8	2.1
1993-94	2.2	-0.4	-2.3	0.4	2.4	7.9	5.8	2.7	2.0
1994-95	3.0	-1.6	6.2	1.1	2.0	5.2	6.0	2.2	3.1
1995-96	2.7	0.2	5.9	2.7	3.6	7.6	5.0	1.5	3.7
QUARTERLY (1989-90=100.0)									
1993 - 94 -									
March	112.0	106.0	91.6	107.9	117.6	142.6	145.5	114.1	113.6
June	113.0	105.8	91.9	108.2	118.5	144.5	148.2	114.8	114.4
1994 - 95 -									
September	114.5	105.2	92.4	108.3	119.6	144.2	148.3	115.1	114.9
December	114.3	105.1	95.6	108.7	119.8	147.8	148.7	116.2	116.0
March	115.7	104.2	100.8	109.5	119.9	150.2	153.0	117.2	117.8
June	115.7	105.1	102.2	110.2	121.4	153.2	155.3	116.5	118.8
1995 - 96 -									
September	117.8	104.8	102.7	111.5	124.4	154.8	155.4	116.5	120.1
December	118.2	105.2	103.8	112.0	124.3	159.7	158.7	117.3	121.1
March	118.2	104.9	103.9	112.4	123.9	162.2	161.0	118.9	121.6
June	118.4	105.5	103.9	112.3	125.3	163.6	160.6	119.2	122.0
PERCENTAGE CHANGE FROM SAME QUARTER OF PREVIOUS YEAR									
1993 - 94 -									
March	0.6	-1.1	-2.6	1.1	2.3	8.6	6.4	2.1	1.8
June	2.4	-1.7	-2.0	0.8	2.1	5.9	6.7	2.2	1.9
1994 - 95 -									
September	3.7	-2.1	-1.0	0.7	2.0	3.9	6.9	2.0	2.0
December	2.7	-1.9	4.4	0.5	1.9	5.6	7.4	2.8	2.8
March	3.3	-1.7	10.0	1.5	2.0	5.3	5.2	2.7	3.7
June	2.4	-0.7	11.2	1.8	2.4	6.0	4.8	1.5	3.8
1995 - 96 -									
September	2.9	-0.4	11.1	3.0	4.0	7.4	4.8	1.2	4.5
December	3.4	0.1	8.6	3.0	3.8	8.1	6.7	0.9	4.4
March	2.2	0.7	3.1	2.6	3.3	8.0	5.2	1.5	3.2
June	2.3	0.4	1.7	1.9	3.2	6.8	3.4	2.3	2.7
PERCENTAGE CHANGE FROM PREVIOUS QUARTER									
1993 - 94 -									
June	0.9	-0.2	0.3	0.3	0.8	1.3	1.9	0.6	0.7
1994 - 95 -									
September	1.3	-0.6	0.5	0.1	0.9	-0.2	0.1	0.3	0.4
December	-0.2	-0.1	3.5	0.4	0.2	2.5	0.3	1.0	1.0
March	1.2	-0.9	5.4	0.7	0.1	1.6	2.9	0.9	1.6
June	0.0	0.9	1.4	0.6	1.3	2.0	1.5	-0.6	0.8
1995 - 96 -									
September	1.8	-0.3	0.5	1.2	2.5	1.0	0.1	0.0	1.1
December	0.3	0.4	1.1	0.4	-0.1	3.2	2.1	0.7	0.8
March	0.0	-0.3	0.1	0.4	-0.3	1.6	1.4	1.4	0.4
June	0.2	0.6	0.0	-0.1	1.1	0.9	-0.2	0.3	0.3

**AVERAGE RETAIL PRICES OF SELECTED CONSUMER ITEMS  
Adelaide (cents)**

Item	Unit	Quarter				
		June 1995	Sept. 1995	Dec. 1995	Mar. 1996	June 1996
Milk, carton, supermarket sales	1 litre	110	114	114	114	113
Cheese, processed, sliced, wrapped	500g	323	327	335	334	337
Butter	500g	151	163	165	165	167
Bread, white loaf, sliced, supermarket sales	680g	139	148	148	152	141
Self-raising flour	2kg	204	204	213	228	238
Beef:						
Rump steak	1kg	1,121	1,177	1,130	1,122	1,168
Comed silverside	1kg	651	639	642	637	645
Lamb:						
Leg	1kg	533	561	516	608	584
Loin chops	1kg	699	745	726	799	812
Forequarter chops	1kg	507	545	514	566	544
Pork:						
Leg	1kg	589	598	593	598	608
Loin chops	1kg	736	747	764	764	765
Chicken, frozen	1kg	323	330	331	350	348
Bacon, middle rashers	250g pkt	291	296	287	303	289
Sausages	1kg	370	374	366	356	358
Potatoes	1kg	87	106	134	72	70
Onions	1kg	118	181	192	108	74
Peaches, canned	825g	186	190	185	186	189
Eggs, 55g	doz	185	210	230	232	240
Sugar, white	2kg	180	174	186	189	180
Tea	250g	165	162	166	175	159
Coffee, instant, jar	150g	546	563	552	552	528
Margarine, polyunsaturated	500g	152	140	148	141	141
Petrol:						
Leaded	1 litre	72.0	75.3	74.0	73.6	75.9
Unleaded	1 litre	69.8	73.1	71.7	71.3	73.6

**ESTIMATED RESIDENT POPULATION AND COMPONENTS OF POPULATION CHANGE  
South Australia**

Period	Live births(a)	Deaths(a)	Components of population change			Total increase	Population at end of period
			Natural increase	Net migration			
				Interstate	Overseas (b)		
ANNUAL							
1985-86	19,657	10,427	9,230	-1,417	5,084	11,353	1,382,550
1986-87	19,628	10,577	9,051	-3,977	6,200	10,214	1,392,764
1987-88	19,288	10,799	8,489	-1,240	5,952	12,145	1,404,909
1988-89	19,528	10,814	8,664	-221	6,665	14,120	1,419,029
1989-90	19,653	11,329	8,253	-252	5,762	13,027	1,432,056
1990-91	19,966	11,120	8,767	1,545	4,619	14,243	1,446,299
1991-92	19,530	11,035	8,532	-133	2,897	11,296	1,457,595
1992-93	19,686	11,163	8,403	-4,650	1,546	5,299	1,462,894
1993-94	20,036	11,743	7,949	-3,466	1,994	6,477	1,469,371
1994-95	19,559	11,496	8,022	-6,529	3,102	4,595	1,473,596
1995-96	18,988	11,186	n.y.a.	n.y.a.	n.y.a.	n.y.a.	n.y.a.
MONTHLY/QUARTERLY							
1994 - 95 -							
May	1,808	1,097	..	..	..	..	..
June	1,710	941	1,967	-1,846	965	1,086	1,473,596
1995 - 96 -							
July	1,506	937	..	..	..	..	..
August	1,617	1,180	..	..	..	..	..
September	1,728	963	1,759	-2,157	1,106	708	1,474,304
October	1,528	1,057	..	..	..	..	..
November	1,665	929	..	..	..	..	..
December	1,397	842	1,752	-1,512	946	1,186	1,475,490
January	1,665	932	..	..	..	..	..
February	1,697	804	..	..	..	..	..
March	1,569	838	2,316	-1,476	1,370	2,210	1,477,700
April	1,417	765	..	..	..	..	..
May	1,755	1,105	..	..	..	..	..
June	1,444	834	n.y.a.	-1,093	n.y.a.	n.y.a.	n.y.a.
1996 - 97 -							
July	1,708	861	..	..	..	..	..

(a) Registrations.

(b) Includes category lumping.

## LABOUR FORCE STATUS OF THE CIVILIAN POPULATION

## South Australia

Period	Employed Full-time Males	Employed Full-time Females	Employed Part-time Males	Employed Part-time Females	Employed Total Males	Employed Total Females	Unemployed Males	Unemployed Females	Labour Force Males	Labour Force Females
ANNUAL AVERAGE ('000)										
1986-87	337.1	137.0	25.4	106.6	362.5	243.6	35.6	24.5	398.1	268.1
1987-88	334.4	137.4	29.3	111.6	363.7	249.0	35.1	24.9	398.8	273.9
1988-89	345.5	145.3	29.7	115.8	375.2	261.1	32.2	22.5	407.4	283.6
1989-90	352.0	149.3	31.5	119.8	383.5	269.1	28.5	20.9	412.0	290.0
1990-91	345.2	148.4	34.1	125.7	379.3	274.1	37.8	25.3	417.1	299.4
1991-92	323.3	145.7	37.5	121.6	360.8	267.3	50.0	29.3	410.8	296.6
1992-93	322.2	143.2	39.2	126.8	361.4	270.0	51.9	29.9	413.3	299.9
1993-94	322.0	146.3	40.0	127.0	362.0	273.3	47.3	29.9	409.3	303.2
1994-95	323.1	151.5	42.6	131.3	365.7	282.8	44.6	28.7	410.3	311.5
1995-96	325.4	150.0	45.5	136.6	370.8	286.6	42.6	26.1	413.5	312.7
PERCENTAGE CHANGE FROM PREVIOUS YEAR, ANNUAL AVERAGE										
1987-88	-0.8	0.3	15.4	4.7	0.3	2.2	-1.4	1.6	0.2	2.2
1988-89	3.3	5.7	1.4	3.8	3.2	4.9	-8.3	-9.6	2.2	3.5
1989-90	1.9	2.8	6.1	3.5	2.2	3.1	-11.5	-7.1	1.1	2.3
1990-91	-1.9	-0.6	8.3	4.9	-1.1	1.9	32.6	21.1	1.2	3.2
1991-92	-6.3	-1.8	10.0	-3.3	-4.9	-2.5	32.3	15.8	-1.5	-0.9
1992-93	-0.3	-1.7	4.5	4.3	0.2	1.0	3.8	2.0	0.6	1.1
1993-94	-0.1	2.2	2.0	0.2	0.2	1.2	-8.9	0.0	-1.0	1.1
1994-95	0.3	3.6	6.5	3.4	1.0	3.5	-5.7	-4.0	0.2	2.7
1995-96	0.7	-1.0	6.7	4.0	1.4	1.3	-4.4	-9.0	0.8	0.4
MONTHLY, ORIGINAL ('000)										
1995 - 96 -										
August	323.2	149.1	45.7	139.2	369.0	288.3	43.4	24.1	412.4	312.4
September	326.4	148.7	46.6	136.3	373.0	285.0	44.9	25.8	418.0	310.8
October	324.7	148.9	44.6	132.5	369.3	281.4	43.5	24.7	412.8	306.1
November	328.7	151.7	43.7	133.7	372.4	285.4	40.5	23.5	412.9	308.9
December	334.2	156.9	43.2	132.0	377.4	289.0	40.7	25.8	418.1	314.7
January	324.4	149.6	45.8	127.9	370.2	277.5	45.5	29.3	415.7	306.8
February	326.6	150.1	43.4	132.4	369.9	282.6	46.8	29.6	416.8	312.2
March	324.6	147.9	45.9	139.8	370.5	287.6	42.0	27.0	412.5	314.6
April	321.5	147.1	49.6	143.2	371.1	290.2	42.3	27.0	413.4	317.2
May	322.8	151.3	43.8	140.3	366.6	291.6	41.4	26.8	408.0	318.5
June	322.2	148.2	47.7	145.4	369.9	293.6	38.1	23.7	407.9	317.3
1996 - 97 -										
July	323.7	151.0	47.0	141.6	370.7	292.6	38.2	25.9	408.9	318.5
August	315.9	148.2	49.9	142.0	365.8	290.2	41.3	26.6	407.1	316.8
MONTHLY, TREND ('000)										
1995 - 96 -										
August	323.6	150.5	46.6	136.0	370.2	286.5	44.6	26.0	414.8	312.5
September	325.3	149.9	46.0	135.5	371.3	285.4	43.8	25.7	415.1	311.1
October	326.6	149.6	45.2	134.7	371.8	284.3	43.0	25.5	414.8	309.8
November	327.4	149.5	44.7	134.0	372.1	283.5	42.4	25.5	414.5	309.0
December	327.5	149.5	44.4	134.0	371.9	283.5	42.1	25.6	414.0	309.1
January	327.0	149.4	44.3	134.9	371.3	284.3	42.2	25.8	413.5	310.1
February	326.2	149.5	44.4	136.3	370.6	286.8	42.3	26.0	413.0	311.8
March	325.1	149.7	45.0	137.9	370.0	287.6	42.4	26.2	412.4	313.8
April	324.0	150.1	45.6	139.2	369.6	289.3	42.2	26.4	411.8	315.7
May	323.0	150.6	46.4	140.1	369.4	290.7	41.7	26.6	411.2	317.3
June	322.2	150.9	47.3	140.7	369.5	291.6	41.1	26.9	410.7	318.6
1996 - 97 -										
July	321.4	151.1	48.3	141.0	369.7	292.1	40.6	27.3	410.3	319.4
August	320.7	151.2	49.2	141.0	369.9	292.2	40.2	27.8	410.0	320.0
PERCENTAGE CHANGE FROM PREVIOUS MONTH, TREND										
1995 - 96 -										
September	0.5	-0.4	-1.3	-0.4	0.3	-0.4	-1.8	-1.2	0.1	-0.4
October	0.4	-0.2	-1.7	-0.6	0.1	-0.4	-1.8	-0.8	-0.1	-0.4
November	0.2	-0.1	-1.1	-0.5	0.1	-0.3	-1.4	0.0	-0.1	-0.3
December	0.0	0.0	-0.7	0.0	-0.1	0.0	-0.7	0.4	-0.1	0.0
January	-0.2	-0.1	-0.2	0.7	-0.2	0.3	0.2	0.8	-0.1	0.3
February	-0.2	0.1	0.2	1.0	-0.2	0.5	0.2	0.8	-0.1	0.5
March	-0.3	0.1	1.4	1.2	-0.2	0.6	0.2	0.8	-0.1	0.6
April	-0.3	0.3	1.3	0.9	-0.1	0.6	-0.5	0.8	-0.1	0.6
May	-0.3	0.3	1.8	0.6	-0.1	0.5	-1.2	0.8	-0.1	0.5
June	-0.2	0.2	1.9	0.4	0.0	0.3	-1.4	1.1	-0.1	0.4
1996 - 97 -										
July	-0.2	0.1	2.1	0.2	0.1	0.2	-1.2	1.5	-0.1	0.3
August	-0.2	0.1	1.9	0.0	0.1	0.0	-1.0	1.8	-0.1	0.2



**LABOUR FORCE STATUS OF THE CIVILIAN POPULATION AGED 15 AND OVER**  
**South Australia**

Period	Civilian Population aged 15 and over Males ('000)	Civilian Population aged 15 and over Females ('000)	Unemployment rate Ages 15-19 Persons (%)	Unemployment rate All Ages Males (%)	Unemployment rate All Ages Females (%)	Unemployment rate All Ages Persons (%)	Participation rate Males (%)	Participation rate Females (%)	Participation rate Persons (%)
<b>ANNUAL AVERAGE</b>									
1984-85	518.8	538.9	22.1	9.0	9.6	9.2	74.9	45.4	59.9
1985-86	526.9	545.6	20.6	8.2	8.8	8.4	75.6	46.8	60.5
1986-87	534.8	552.4	22.1	8.9	9.1	9.0	74.4	48.5	61.3
1987-88	542.4	560.0	20.8	8.8	9.1	8.9	73.5	48.9	61.0
1988-89	547.9	566.9	17.8	7.9	7.9	7.9	74.3	50.0	62.0
1989-90	552.4	573.4	16.2	6.9	7.2	7.1	74.6	50.6	62.4
1990-91	558.3	579.8	19.2	9.1	8.4	8.8	74.7	51.6	63.0
1991-92	563.9	585.4	25.0	12.1	9.9	11.2	72.9	50.7	61.6
1992-93	567.4	588.9	26.6	12.6	10.0	11.5	72.8	51.0	61.7
1993-94	570.6	592.0	28.3	11.5	9.8	10.8	71.7	51.2	61.3
1994-95	573.7	594.7	25.2	10.9	9.2	10.2	71.5	52.4	61.8
1995-96	576.2	597.1	26.8	10.3	8.3	9.5	71.7	52.4	61.9
<b>PERCENTAGE CHANGE FROM PREVIOUS YEAR, ANNUAL AVERAGE</b>									
1985-86	1.6	1.2	..	..	..	..	..	..	..
1986-87	1.5	1.2							
1987-88	1.4	1.4							
1988-89	1.0	1.2							
1989-90	0.8	1.1							
1990-91	1.1	1.1							
1991-92	1.0	1.0							
1992-93	0.6	0.6							
1993-94	0.6	0.6							
1994-95	0.6	0.5							
1995-96	0.4	0.5							
<b>MONTHLY, ORIGINAL</b>									
1994 - 95 -									
June	574.9	595.8	24.3	11.4	8.0	9.9	71.5	52.8	62.0
1995 - 96 -									
July	575.0	595.9	23.8	10.1	8.0	9.2	71.3	52.6	61.8
August	575.1	596.1	27.2	10.5	7.7	9.3	71.7	52.4	61.9
September	575.3	596.2	27.5	10.7	8.3	9.7	72.7	52.1	62.2
October	575.5	596.5	30.8	10.5	8.1	9.5	71.7	51.3	61.3
November	575.7	596.7	25.3	9.8	7.6	8.9	71.7	51.8	61.6
December	575.9	596.9	25.6	9.7	8.2	9.1	72.6	52.7	62.5
January	576.2	597.2	30.5	10.9	9.6	10.4	72.1	51.4	61.6
February	576.5	597.5	30.5	11.2	9.5	10.5	72.3	52.3	62.1
March	576.7	597.7	26.6	10.2	8.6	9.5	71.5	52.6	61.9
April	577.0	598.0	24.6	10.2	8.5	9.5	71.7	53.0	62.2
May	577.3	598.2	27.3	10.1	8.4	9.4	70.7	53.2	61.8
June	577.6	598.5	22.4	9.3	7.5	8.5	70.6	53.0	61.7
1996 - 97 -									
July	578.0	598.9	24.1	9.3	8.1	8.8	70.7	53.2	61.8
August	578.4	599.2	n.y.a.	10.2	8.4	9.4	70.4	52.9	61.5
<b>MONTHLY, TREND</b>									
1994 - 95 -									
June	n.a.	n.a.	n.a.	10.9	8.6	9.9	71.9	52.7	62.1
1995 - 96 -									
July				10.9	8.5	9.8	72.0	52.6	62.2
August				10.7	8.3	9.7	72.1	52.4	62.1
September				10.6	8.3	9.6	72.2	52.2	62.0
October				10.4	8.2	9.5	72.1	51.9	61.8
November				10.2	8.2	9.4	72.0	51.8	61.7
December				10.2	8.3	9.4	71.9	51.8	61.7
January				10.2	8.3	9.4	71.8	51.9	61.7
February				10.3	8.4	9.4	71.6	52.2	61.7
March				10.3	8.4	9.5	71.5	52.5	61.8
April				10.3	8.4	9.4	71.4	52.8	61.9
May				10.2	8.4	9.4	71.2	53.0	62.0
June				10.0	8.5	9.3	71.1	53.2	62.0
1996 - 97 -									
July				9.9	8.6	9.3	71.0	53.3	62.0
August				9.8	8.7	9.3	70.9	53.4	62.0

**LABOUR FORCE STATUS OF THE CIVILIAN POPULATION AGED 15 AND OVER**  
**Adelaide Statistical Division and the balance of South Australia**

Period	Employed Males (000)	Employed Females (000)	Unemployed Males (000)	Unemployed Females (000)	Unemploy- ment rate Males (%)	Unemploy- ment rate Females (%)	Participa- tion rate Males (%)	Participa- tion rate Females (%)
<b>ADELAIDE STATISTICAL DIVISION</b>								
1993 - 94 -								
February	261.3	202.7	39.4	25.8	13.1	11.3	71.6	51.2
May	265.2	207.0	34.0	24.3	11.4	10.5	71.1	51.8
1994 - 95 -								
August	260.9	209.8	36.6	23.3	12.3	10.0	70.6	52.1
November	261.7	212.6	33.2	23.1	11.3	9.8	69.9	52.6
February	267.9	209.6	35.8	24.7	11.8	10.6	71.9	52.3
May	264.7	212.0	34.6	22.0	11.6	9.4	70.8	52.2
1995 - 96 -								
August	263.1	215.3	33.9	19.4	11.4	8.3	70.2	52.3
November	265.3	212.3	32.8	17.0	11.0	7.4	70.4	51.1
February	265.0	212.1	37.3	22.7	12.3	9.7	71.3	51.2
May	264.7	218.5	32.7	21.1	11.0	8.8	70.0	53.2
1996 - 97 -								
August	266.0	214.4	31.3	21.0	10.5	8.9	69.8	52.2
<b>ASD: NORTHERN ADELAIDE</b>								
1993 - 94 -								
February	79.3	60.9	12.1	9.1	13.2	13.0	74.6	52.9
May	82.7	59.9	9.7	9.1	10.5	13.1	75.3	53.1
1994 - 95 -								
August	83.0	62.8	11.7	7.6	12.4	10.8	75.9	52.5
November	80.7	62.8	12.9	6.9	13.8	9.9	73.0	51.6
February	82.8	63.7	13.4	8.1	13.9	11.3	74.7	54.8
May	82.7	60.9	12.1	8.1	12.7	11.7	75.8	52.5
1995 - 96 -								
August	81.6	64.8	14.1	7.7	14.8	10.6	75.2	53.4
November	83.4	67.2	11.8	6.1	12.4	8.3	75.5	54.3
February	85.3	70.3	12.9	6.5	13.1	8.5	77.6	56.5
May	90.1	73.1	10.5	6.1	10.5	7.7	77.2	56.6
1996 - 97 -								
August	85.8	67.3	11.2	6.9	11.5	9.2	76.2	9.2
<b>ASD: WESTERN ADELAIDE</b>								
1993 - 94 -								
February	48.4	35.7	10.7	5.4	18.0	13.2	67.5	44.1
May	50.7	39.5	9.2	4.3	15.3	9.9	68.0	46.4
1994 - 95 -								
August	48.2	38.8	9.2	4.6	16.0	10.7	66.1	46.7
November	47.5	39.3	7.2	6.4	13.2	13.9	64.7	48.2
February	45.7	39.0	5.9	5.4	11.4	12.1	64.0	46.5
May	48.7	38.4	6.5	4.5	11.8	10.5	67.1	46.9
1995 - 96 -								
August	47.8	36.9	7.6	3.4	13.8	8.4	65.9	46.7
November	47.1	38.2	7.9	3.2	14.4	7.8	63.8	47.1
February	44.0	36.8	9.5	5.1	17.8	12.3	62.5	46.9
May	41.8	36.7	7.5	3.3	15.2	8.1	60.1	48.5
1996 - 97 -								
August	45.0	36.7	7.6	4.8	14.5	11.6	62.0	45.0

**LABOUR FORCE STATUS OF THE CIVILIAN POPULATION AGED 15 AND OVER**  
**Adelaide Statistical Division and the balance of South Australia**

Period	Employed Males ('000)	Employed Females ('000)	Unem- ployed Males ('000)	Unem- ployed Females ('000)	Unemploy- ment rate Males (%)	Unemploy- ment rate Females (%)	Participa- tion rate Males (%)	Participa- tion rate Females (%)
ASD: EASTERN ADELAIDE								
1993 - 94 -								
February	54.9	45.2	6.5	4.1	10.6	8.3	71.0	55.1
May	54.2	47.7	6.0	4.4	9.9	8.4	69.5	54.8
1994 - 95 -								
August	58.0	50.5	6.2	3.8	9.9	7.0	71.8	58.8
November	58.8	50.7	5.4	2.4	8.5	4.5	72.1	59.3
February	59.4	45.8	7.4	3.8	11.0	7.7	74.2	54.5
May	58.5	45.2	6.5	3.5	10.0	7.2	69.7	53.6
1995 - 96 -								
August	56.4	46.6	4.8	2.5	7.9	5.2	70.9	53.6
November	54.3	45.9	5.2	*1.9	8.7	*4.0	70.4	51.2
February	53.0	43.9	5.4	4.9	9.3	10.0	69.3	52.2
May	51.4	44.1	4.2	4.4	7.5	9.1	65.6	52.2
1996 - 97 -								
August	54.4	43.5	4.4	3.1	7.5	6.7	66.6	52.1
ASD: SOUTHERN ADELAIDE								
1993 - 94 -								
February	78.7	60.9	10.1	7.2	11.4	10.6	71.9	52.0
May	77.6	59.9	9.1	6.6	10.5	9.9	70.3	52.1
1994 - 95 -								
August	73.7	57.8	9.5	7.3	11.4	11.2	67.4	50.8
November	74.7	59.8	7.6	7.5	9.3	11.1	68.5	52.4
February	80.0	61.1	9.2	7.5	10.4	10.9	72.5	52.5
May	74.8	67.5	9.5	5.9	11.3	8.0	69.0	54.6
1995 - 96 -								
August	77.4	66.9	7.3	5.7	8.6	7.9	67.6	53.9
November	80.4	61.0	7.9	5.7	8.9	8.6	69.7	50.4
February	82.7	61.1	9.5	6.2	10.3	9.2	72.1	51.4
May	81.3	64.6	10.5	7.3	11.4	10.2	71.9	53.5
1996 - 97 -								
August	80.7	66.9	8.1	6.1	9.1	8.4	70.9	55.2
BALANCE OF SOUTH AUSTRALIA (Excludes ASD)								
1993 - 94 -								
February	98.3	69.6	10.7	7.7	9.8	10.0	72.1	52.8
May	98.6	67.3	9.8	6.7	9.0	9.1	71.6	50.5
1994 - 95 -								
August	101.9	69.6	7.8	5.5	7.1	7.3	72.6	51.2
November	102.6	69.2	9.0	6.6	8.1	8.7	73.7	51.7
February	103.9	73.0	9.6	6.1	8.5	7.7	74.8	53.8
May	103.2	76.3	8.6	4.1	7.7	5.1	73.5	54.6
1995 - 96 -								
August	105.9	73.0	9.5	4.7	8.2	6.0	75.8	52.7
November	107.2	73.0	7.6	6.5	6.7	8.2	75.4	53.9
February	105.0	70.5	9.5	6.9	8.3	8.9	75.2	52.3
May	101.9	73.1	8.7	5.7	7.9	7.3	72.6	53.2
1996 - 97 -								
August	99.8	75.7	10.0	5.7	9.1	7.0	72.0	54.8

\* Estimate has a relative standard error exceeding 25%. It is subject to sampling variability too high for most practical uses.

**AVERAGE WEEKLY EARNINGS OF EMPLOYEES**  
**South Australia**

Period	Full-time adults						All employees		
	Ordinary time earnings			Total earnings			Males	Females	Persons
	Males	Females	Persons	Males	Females	Persons			
ANNUAL AVERAGE (\$ per week)									
1984-85	381.90	319.30	364.80	407.40	325.80	385.10	367.20	238.70	316.20
1985-86	406.30	340.50	388.30	431.80	346.60	408.40	389.00	252.70	334.50
1986-87	431.80	363.70	412.20	455.90	370.20	431.20	411.80	268.90	352.20
1987-88	458.60	389.70	438.40	485.00	397.00	459.20	440.10	295.10	379.60
1988-89	481.50	424.30	465.70	517.60	435.10	494.90	473.40	315.10	408.50
1989-90	517.50	454.90	499.40	560.70	466.50	533.50	511.60	338.00	437.80
1990-91	561.30	486.10	537.90	598.90	496.10	566.90	546.70	358.10	462.00
1991-92	588.40	524.10	567.80	624.90	534.00	595.80	564.80	386.90	483.70
1992-93	610.10	534.90	585.40	646.40	546.80	613.70	560.00	382.60	477.40
1993-94	625.10	547.60	600.00	667.50	560.10	632.70	595.10	396.60	503.30
1994-95	632.70	559.10	608.20	681.70	572.50	645.30	599.90	411.90	513.40
1995-96	653.80	555.90	622.50	703.15	568.50	660.05	620.10	403.90	520.65
PERCENTAGE CHANGE FROM PREVIOUS YEAR									
1985-86	6.4	6.6	6.4	6.0	6.4	6.1	5.9	5.9	5.8
1986-87	6.3	6.8	6.2	5.6	6.8	5.6	5.9	6.4	5.3
1987-88	6.2	7.1	6.4	6.4	7.2	6.5	6.9	9.7	7.8
1988-89	5.0	8.9	6.2	6.7	9.6	7.8	7.6	6.8	7.6
1989-90	7.5	7.2	7.2	8.3	7.2	7.8	8.1	7.3	7.2
1990-91	8.5	6.9	7.7	6.8	6.3	6.3	6.9	5.9	5.5
1991-92	4.8	7.8	5.6	4.3	7.6	5.1	3.3	8.0	4.7
1992-93	3.7	2.1	3.1	3.4	2.4	3.0	-0.8	-1.1	-1.3
1993-94	2.5	2.4	2.5	3.3	2.4	3.1	6.3	3.7	5.4
1994-95	1.2	2.1	1.4	2.1	2.2	2.0	0.8	3.9	2.0
1995-96	3.3	-0.6	2.4	3.1	-0.7	2.3	3.4	-1.9	1.4
QUARTERLY (\$ per week)									
1993 - 94 -									
20 August	631.00	546.90	603.30	673.30	559.50	635.80	599.70	394.20	503.10
19 November	626.50	543.20	599.40	667.10	554.90	630.70	583.50	386.70	492.50
18 February	619.90	548.80	597.30	665.30	558.80	631.50	601.30	405.50	512.80
20 May	622.90	551.40	599.80	664.30	567.10	632.90	595.80	399.80	504.80
1994 - 95 -									
19 August	628.20	553.70	602.60	674.20	566.70	637.20	591.40	410.80	507.40
18 November	619.10	558.00	598.60	667.50	572.80	635.70	586.90	410.20	505.10
17 February	648.40	560.80	619.90	699.90	572.80	658.50	620.10	415.80	527.90
19 May	635.10	563.90	611.70	685.20	577.80	649.90	601.10	410.80	513.30
1995 - 96 -									
18 August	639.90	560.10	613.80	684.50	571.80	647.60	600.80	408.60	510.20
17 November	647.60	549.20	616.10	693.10	560.90	650.90	607.60	396.30	510.60
16 February	658.90	557.20	626.30	713.60	569.50	667.30	631.40	402.40	527.20
17 May	668.90	557.10	633.80	721.40	571.80	674.40	640.50	408.30	534.60
PERCENTAGE CHANGE FROM CORRESPONDING REFERENCE DATE IN PREVIOUS YEAR									
1994 - 95 -									
19 August	-0.4	1.2	-0.1	0.1	1.3	0.2	-1.4	4.2	0.9
18 November	-1.2	2.7	-0.1	0.1	3.2	0.8	0.6	6.1	2.6
17 February	4.6	2.2	3.8	5.2	2.5	4.3	3.1	2.5	2.9
19 May	2.0	2.3	2.0	3.1	1.9	2.7	0.9	2.8	1.7
1995 - 96 -									
18 August	1.9	1.2	1.9	1.5	0.9	1.6	1.6	-0.5	0.6
17 November	4.6	-1.6	2.9	3.8	-2.1	2.4	3.5	-3.4	1.1
16 February	1.6	-0.6	1.0	2.0	-0.6	1.3	1.8	-3.2	-0.1
17 May	5.3	-1.2	3.6	5.3	-1.0	3.8	6.6	-0.6	4.1
PERCENTAGE CHANGE FROM PREVIOUS REFERENCE DATE									
1993 - 94 -									
19 November	-0.7	-0.7	-0.6	-0.9	-0.8	-0.8	-2.7	-1.9	-2.1
18 February	-1.1	1.0	-0.4	-0.3	0.7	0.1	3.1	4.9	4.1
20 May	0.5	0.5	0.4	-0.2	1.5	0.2	-0.9	-1.4	-1.6
1994 - 95 -									
19 August	0.9	0.4	0.5	1.5	-0.1	0.7	-0.7	2.8	0.5
18 November	-1.4	0.8	-0.7	-1.0	1.1	-0.2	-0.8	-0.1	-0.5
17 February	4.7	0.5	3.6	4.9	0.0	3.6	5.7	1.4	4.5
19 May	-2.1	0.6	-1.3	-2.1	0.9	-1.3	-3.1	-1.2	-2.8
1995 - 96 -									
18 August	0.8	-0.7	0.3	-0.1	-1.0	-0.4	0.0	-0.5	-0.6
17 November	1.2	-1.9	0.4	1.3	-1.9	0.5	1.1	-3.0	0.1
16 February	1.7	1.5	1.7	3.0	1.5	2.5	3.9	1.5	3.3
17 May	1.5	0.0	1.2	1.1	0.4	1.1	1.4	1.5	1.4

**FINANCE COMMITMENTS**  
**South Australia**

Secured housing finance commitments to individuals						
Construction and purchase of dwellings						
Period	Number of dwelling units	Amount (\$ million)	Alterations and additions (\$ million)	Personal finance commitments (\$ million)	Commercial finance commitments (\$ million)	Lease finance commitments (\$ million)
ANNUAL						
1984-85	28,484	1,127.6	48.2	n.a.	n.a.	n.a.
1985-86	21,714	920.1	48.9	1,203.9	3,492.7	339.8
1986-87	21,658	965.5	47.1	1,222.4	4,242.8	334.5
1987-88	26,582	1,266.6	47.0	1,448.9	6,486.6	392.1
1988-89	29,977	1,574.2	51.4	1,534.1	7,285.5	512.4
1989-90	25,650	1,438.2	45.8	1,525.7	6,926.4	445.4
1990-91	28,694	1,731.3	58.8	1,503.6	6,257.0	323.2
1991-92	31,765	2,083.8	88.8	1,456.7	6,667.9	256.2
1992-93	36,960	2,569.5	102.8	1,656.9	5,122.5	249.5
1993-94	45,725	3,387.9	221.8	1,840.3	5,467.2	250.6
1994-95	36,429	2,879.7	242.2	2,152.2	5,405.6	271.4
1995-96	38,707	2,982.2	240.7	2,211.5	6,516.2	265.4
PERCENTAGE CHANGE FROM PREVIOUS YEAR						
1985-86	-23.8	-18.4	1.5	n.a.	n.a.	n.a.
1986-87	-0.3	4.9	-3.7	1.5	21.5	-1.6
1987-88	22.7	31.2	-0.2	18.5	52.9	17.2
1988-89	12.8	24.3	9.4	5.9	12.3	30.7
1989-90	-14.4	-8.6	-10.9	-0.5	-4.9	-13.1
1990-91	11.9	20.4	28.4	-1.4	-9.7	-27.4
1991-92	10.7	20.4	51.0	-3.1	6.6	-20.7
1992-93	16.4	23.3	15.8	13.7	-23.2	-2.6
1993-94	23.7	31.9	115.7	11.1	6.7	0.5
1994-95	-20.3	-15.0	9.2	16.9	-1.1	8.3
1995-96	6.3	3.6	-0.6	2.8	20.5	-2.2
MONTHLY						
1994 - 95 -						
May	2,923	236.9	18.9	193.6	552.5	26.0
June	3,290	268.2	21.7	233.5	517.5	31.7
1995 - 96 -						
July	3,013	243.5	19.3	192.7	490.6	27.4
August	3,307	256.3	17.9	209.5	461.8	20.0
September	3,161	241.5	18.2	182.4	384.2	18.2
October	3,257	246.9	19.6	179.3	412.6	18.8
November	3,593	271.3	23.3	186.1	488.3	21.0
December	2,981	231.2	17.8	171.1	720.2	25.7
January	2,965	226.9	17.4	175.6	562.2	13.0
February	3,482	264.6	20.6	179.2	447.5	23.4
March	3,694	284.8	23.2	186.1	542.7	25.4
April	3,271	249.5	18.3	175.1	604.8	16.3
May	3,276	252.0	18.9	192.4	773.7	24.8
June	2,707	213.6	26.1	182.0	627.7	31.3
1996 - 97 -						
July	3,016	238.0	21.7	190.8	n.y.a.	22.8
PERCENTAGE CHANGE FROM PREVIOUS MONTH						
1994 - 95 -						
June	12.6	13.2	14.8	20.6	-6.3	21.9
1995 - 96 -						
July	-8.4	-9.2	-11.1	-17.5	-5.2	-13.6
August	9.8	5.3	-7.0	8.7	-5.9	-26.9
September	-4.4	-5.8	1.4	-12.9	-16.8	-9.1
October	3.0	2.3	7.6	-1.7	7.4	3.3
November	10.3	9.9	18.9	3.8	18.4	11.7
December	-17.0	-14.8	-23.5	-8.1	47.5	22.3
January	-0.5	-1.9	-2.2	2.6	-21.9	-49.4
February	17.4	16.6	18.1	2.0	-20.4	79.9
March	6.1	7.6	12.8	3.8	21.3	8.4
April	-11.5	-12.4	-20.9	-5.9	11.4	-35.8
May	0.2	1.0	3.2	9.8	27.9	52.1
June	-17.4	-15.2	37.9	-5.4	-18.9	26.2
1996 - 97 -						
July	11.4	11.4	-16.8	4.8	n.y.a.	-27.1

## PUBLICATIONS SOURCE INDEX

- 1 *Australian National Accounts: State Accounts* (5242.0) Quarterly
- 2 *International Merchandise Trade, Australia* (5422.0) Quarterly
- 3 *Retail Trade, Australia* (8501.0) Monthly
- 4 *New Motor Vehicles Registrations, Australia, Preliminary* (9301.0) Monthly
- 5 *Tourist Accommodation, Australia* (8635.0) Quarterly
- 6 *State Estimates of Private New Capital Expenditure* (5646.0) Quarterly
- 7 *Building Approvals, Australia* (8731.0) Monthly
- 8 *Building and Construction Activity, Australia* (8754.0) Quarterly
- 8a *Building Activity, Australia, Dwelling Unit Commencements, Preliminary* (8750.0) Quarterly
- 9 *Engineering Construction Activity, Australia* (8762.0.40.001) Quarterly
- 10 *Manufacturing Production, Australia, Preliminary* (8301.0) Monthly
- 11 *Livestock Products, Australia* (7215.0) Monthly
- 12 *Actual and Expected Private Mineral Exploration, Australia* (8412.0) Quarterly
- 13 *Consumer Price Index* (6401.0) Quarterly
- 14 *Price Index of Materials Used in House Building, Six State Capital Cities and Canberra* (6408.0) Monthly
- 15 *Price Index of Materials Used in Building Other Than House Building, Six State Capital Cities and Canberra* (6407.0) Monthly
- 16 *House Price Indexes: Eight Capital Cities* (6416.0) Quarterly
- 17 *Australian Demographic Statistics* (3101.0) Quarterly
- 18 *The Labour Force, Australia, Preliminary* (6202.0) Monthly
- 19 *Job Vacancies and Overtime, Australia* (6354.0) Quarterly
- 20 *Industrial Disputes, Australia* (6321.0) Monthly
- 21 Unpublished overseas arrival and departure statistics on microfiche
- 22 *Average Weekly Earnings, States and Australia* (6302.0) Quarterly
- 23 *Award Rates of Pay Indexes, Australia* (6312.0) Monthly
- 24 *Housing Finance for Owner Occupation, Australia* (5609.0) Monthly
- 25 Unpublished statistics available from PC AUSSTATS
- 26 *Reserve Bank of Australia Bulletin*

---

## ABS PUBLICATIONS AND PRODUCTS

Statistics collected by the ABS are generally made available in published form. Some, including those not published, are available in one or more of the following forms: microfiche, magnetic tape, computer printout, CD, floppy disk, photocopy and clerically extracted tabulation.

Current publications produced by the ABS are listed in the *Catalogue of Publications and Products, Australia* (1101.0). The ABS also issues on Tuesdays and Fridays a *Release Advice* (1105.0) which lists publications to be released within the next few days. The Catalogue and Release Advice are available from any ABS Office.

To receive ABS publications on a regular basis contact the *ABS Publication Mailing Service* on 1800 02 0608.

A large range of data is available via on-line services, diskette, magnetic tape, tape cartridge and CD ROM. For more details about our electronic data services, contact any ABS Office.

The *ABS Information Consultancy Service* has specialist staff to assist and advise clients

with their statistical inquiries. For more detailed information about these services call at the ABS, 55 Currie Street, Adelaide, telephone the Information Officer on (08) 8237 7100, or write to Information Service, ABS, GPO Box 2272, Adelaide SA 5001.

The ABS also provides a *Statistical Consultancy Service*, for expert assistance in survey, sample and questionnaire design, data collection, processing and analysis, and statistical modelling. For more information contact Gary Niedorfer, on (08) 8237 7379.

### SYMBOLS AND OTHER USAGES

- n.a. not available
- n.y.a. not yet available
- .. not applicable
- 0, 0.0 nil or rounded to zero

Where figures have been rounded, discrepancies may occur between sums of the component items and totals.



Produced by the Australian Government Publishing Service  
© Commonwealth of Australia 1996

Recommended retail price: \$15.50



2130740010965  
ISSN 1039-8880